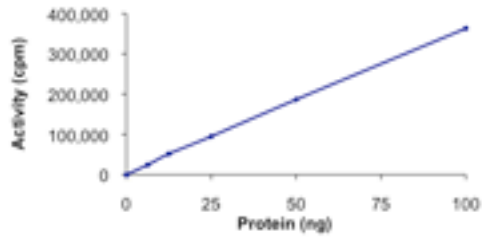


## MAPK14

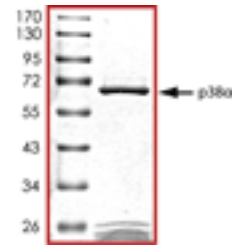
### Recombinant Human MAPK14/p38 alpha, Active

<b>Catalog No.</b>	CRP277A CRP277B	<b>Quantity:</b>	5 µg 10 µg
<b>Alternate Names:</b>	Mitogen-activated protein kinase 14, MAP kinase 14, MAP kinase p38 alpha, Stress-activated protein kinase 2a, SAPK2a, Cytokine suppressive anti-inflammatory drug-binding protein, CSAID-binding protein, CSBP		
<b>Description:</b>	MAPK14/p38 alpha is a member of the p38 MAPK family which are activated by various environmental stresses and proinflammatory cytokines. The activation of p38 requires its phosphorylation by MAP kinase kinases (MKKs), or its autophosphorylation triggered by the interaction of MAP3K7IP1/TAB1 protein with this kinase. The substrates of p38 include transcription regulator ATF2, MEF2C, and MAX, cell cycle regulator CDC25B, and tumor suppressor p53, which suggest the roles of this kinase in stress related transcription and cell cycle regulation, as well as in genotoxic stress response.		
<b>UniProt ID:</b>	Q16539		
<b>Gene ID:</b>	1432		
<b>Source:</b>	Sf9 insect cells using baculovirus		
<b>Tag:</b>	N-terminal GST		
<b>Molecular Weight:</b>	~67 kDa		
<b>Formulation:</b>	50 mM Tris-HCl, 150 mM NaCl, 10 mM glutathione, 0.25 mM DTT, 0.1 mM EDTA, 0.1 mM PMSF, 25% Glycerol, pH 7.5		
<b>Concentration:</b>	0.10 mg/ml		
<b>Purity:</b>	>90% by SDS-PAGE (Coomassie)		
<b>Amino Acid Sequence:</b>	Full-length		
<b>Biological Activity:</b>	Kinase active		
<b>Specific Activity:</b>	> 150 nmol/min/mg., by Kinase Specific Activity: nmol phosphate incorporated into the PKB-sub peptide (CKRPRAASFAE) per minute per mg protein at 30°C for 15 minutes using a final concentration of 50 µM ATP (0.83 µCi/assay).		
<b>Applications:</b>	WB, Kinase Assay		
<b>Storage &amp; Stability:</b>	Stable as supplied for up to 1 year at -80°C. It is recommended to prepare working aliquots and store at -80°C. <b>Avoid repeat freeze/thaw cycles.</b>		

Sample Kinase Activity Plot



Purity



NOT FOR HUMAN USE. FOR RESEARCH ONLY. NOT FOR DIAGNOSTIC OR THERAPEUTIC USE.



**Cell Sciences®**  
65 Parker Street  
Unit 11  
Newburyport, MA 01950

Toll Free: 888-769-1246  
Phone: 978-572-1070  
Fax: 978-992-0298

E-mail: [info@cellsciences.com](mailto:info@cellsciences.com)  
Website: [www.cellsciences.com](http://www.cellsciences.com)