

PLK1

Recombinant Human PLK1 (Met₁-Ser₆₀₃) Active GST-His

Catalog No.	CRP055	Quantity:	50 µg
Alternate Names:	PLK, STPK13, cell cycle regulated protein kinase, polo (Drosophila)-like kinase, polo like kinase, polo-like kinase		
Description:	PLK1, full length, amino acids M ₁ -S ₆₀₃ (as in GenBank entry NM_005030)*, N-terminal GST-HIS ₆ fusion protein with a Thrombin cleavage site, expressed in Sf9 insect cells *Sequence may contain documented polymorphisms Detailed amino acid sequence on request		
Concentration:	0.110 µg/µl		
Gene ID:	5347		
Protein Accession No:	NM_005030		
Source:	Baculovirus infected Sf9 cells		
Molecular Weight:	Theoretical MW _{Fusion Protein} : 99,311 Da		
Formulation:	50 mM HEPES pH 7.5 + 100 mM NaCl + 5 mM DTT + 15 mM reduced glutathione, 20% glycerol		
Purification:	GST-Affinity Chromatography		
Product Identity:	PLK1 was confirmed as PLK1 by mass spectroscopy LC-ESI-MS/MS		
Specific Activity:	165 pmol/µg×min		

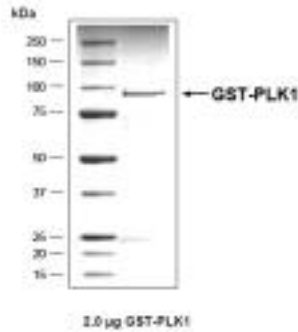
Method for determination of K_m value and specific activity:

- Assay conditions:
 - 60 mM HEPES-NaOH, pH 7.5
 - 3 mM MgCl₂
 - 3 mM MnCl₂
 - 3 µM Na-orthovanadate
 - 1.2 mM DTT
 - 2.5 µg / 50 µl PEG_{20,000}
 - ATP (variable)
 - Substrate: R₁₁-CDC25C-derived Peptide (R₁₁-ISDELMDATFADQEAK), 5 µg / 50 µl
 - PLK1: 100 ng / 50 µl
- Filter binding assay
 - MSPH membrane (Millipore)

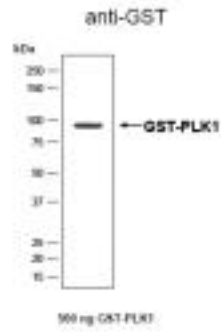


Storage & Stability: Store in working aliquots at -80°C. **Avoid repeated freeze-thaw cycles.**

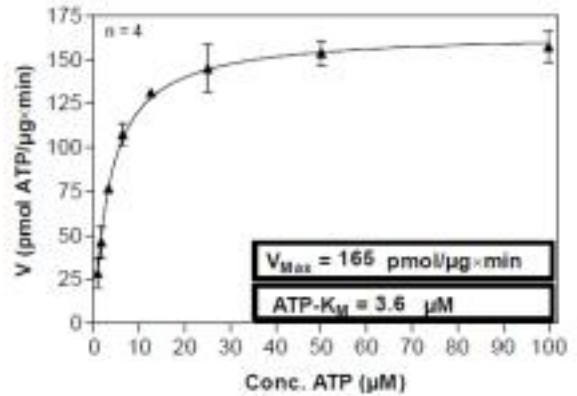
Coomassie stain:



Western blot analysis



Determination of K_m value for ATP:



NOT FOR HUMAN USE. FOR RESEARCH ONLY. NOT FOR DIAGNOSTIC OR THERAPEUTIC USE.



Cell Sciences®
480 Neponset Street
Bldg 12A
Canton, MA 02021

Toll Free: 888-769-1246
Phone: 781-828-0610
Fax: 781-828-0542

E-mail: info@cellsciences.com
Website: www.cellsciences.com