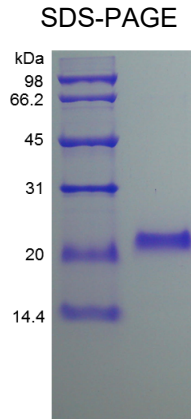


TNFRSF11B

Recombinant Human Osteoprotegerin

Catalog No.	CRO200A CRO200B CRO200C	Quantity:	10 µg 100 µg 1 mg
Alternate Names:	Tumor necrosis factor receptor superfamily member 11b, Osteoclastogenesis inhibitory factor, OPG		
Description:	Osteoprotegerin (OPG), also named osteoclastogenesis inhibitory factor (OCIF), and tumor necrosis factor receptor superfamily member 11B (TNFRSF11B), is a TNFRSF11B-encoded protein in humans. OPG is a 401 a.a. basic glycoprotein which comprises 7 structural domains. It is either a 60 kDa monomer or a 120 kDa dimer linked by disulfide bridges. OPG acts as a decoy receptor for the receptor activator of nuclear factor kappa B ligand (RANKL) and inhibits the activation of osteoclasts and promotes osteoclast apoptosis in vitro and may also play a role in preventing arterial calcification. OPG has been applied to decrease bone resorption in women with postmenopausal osteoporosis and in patients with lytic bone metastases. Mature human OPG shares 86 %, 87 %, 92 %, 92 % and 88 % amino acid sequence identity with mouse, rat, equine, canine and bovine OPG, respectively.		
UniProt ID:	O00300		
Gene ID:	4982		
Source:	<i>E. coli</i>		
Molecular Weight:	19.7 kDa (173 aa)		
Formulation:	Lyophilized from sterile-filtered 20 mM PBS, pH 6.0		
Purity:	≥95% by SDS-PAGE and HPLC analyses		
Endotoxin Level:	<1 EU/µg as determined by LAL method.		
Biological Activity:	ED ₅₀ < 10 ng/ml, as determined by neutralizing the stimulation of U937 cells in the presence of 10 ng/mL soluble rHuRANKL (sRANKL).		
Specific Activity:	>1.0 × 10 ⁵ IU/mg		
Amino Acid Sequence:	ETFPKYLHY DEETSHQLLC DKCPPGTYLK QHCTAKWKTV CAPCPDHYYT DSWHTSDECL YCSPVCKELQ YVKQECNRTH NRVCECKEGR YLEIEFCLKH RSCPPGFGVV QAGTPERNV CKRCPDGFFS NETSSKAPCR KHTNCSVFGL LLTQKGNATH DNICSGNSES TQK		
Reconstitution:	Centrifuge vial prior to opening. Add sterile distilled water or aqueous buffer to a concentration of 0.1-1.0 mg/ml.		
Storage & Stability:	Upon receipt, store at -20°C to -80°C. After reconstitution, the preparation is stable for up to one week at 2-8°C. For maximal stability, prepare working aliquots and store at -20°C to -80°C. For long term storage of reconstituted protein, it is recommended that a carrier protein such as 0.1% BSA or HSA be added. This depends on the particular application. Avoid repeated freeze/thaw cycles.		





NOT FOR HUMAN USE. FOR RESEARCH ONLY. NOT FOR DIAGNOSTIC OR THERAPEUTIC USE.



Cell Sciences®
65 Parker Street
Unit 11
Newburyport, MA 01950

Toll Free: 888-769-1246
Phone: 978-572-1070
Fax: 978-992-0298

E-mail: info@cellsciences.com
Website: www.cellsciences.com