

MST4

Recombinant Human Serine/Threonine Protein Kinase Active GST-His

Catalog No.	CRM024	Quantity:	50 µg
Alternate Names:	MASK, MST4, Mst3 and SOK1-related kinase, STE20-like kinase MST4, mammalian Ste20-like protein kinase 4, mammalian sterile 20-like 4, serine/threonine protein kinase MASK		
Description:	Human MST4, full length, amino acids M ₁ -P ₄₁₆ (as in NCBI/Protein entry NP_057626.1), N-terminal GST-HIS ₆ fusion protein with a Thrombin cleavage site, expressed in Sf9 insect cells		
Concentration:	0.209 µg/µl		
Gene ID:	51765		
Protein Accession No:	NP_057626.1		
Source:	Baculovirus infected Sf9 cells		
Molecular Weight:	Theoretical MW _{Fusion Protein} : 76,424 Da		
Formulation:	50 mM HEPES pH 7.5 + 100 mM NaCl + 5 mM DTT + 15 mM reduced glutathione, 20% glycerol		
Purification:	GST-Affinity Chromatography		
Product Identity:	MST4 was confirmed as MST4 by mass spectroscopy LC-ESI-MS/MS		
Specific Activity:	<p>Specific activity: 18 pmol/µg×min ATP-K_m: 3.1 µM</p> <p>Method for determination of K_m value and specific activity:</p> <ul style="list-style-type: none"> • Assay conditions: 60 mM HEPES-NaOH, pH 7.5 3 mM MgCl₂ 3 mM MnCl₂ 3 µM Na-orthovanadate 		

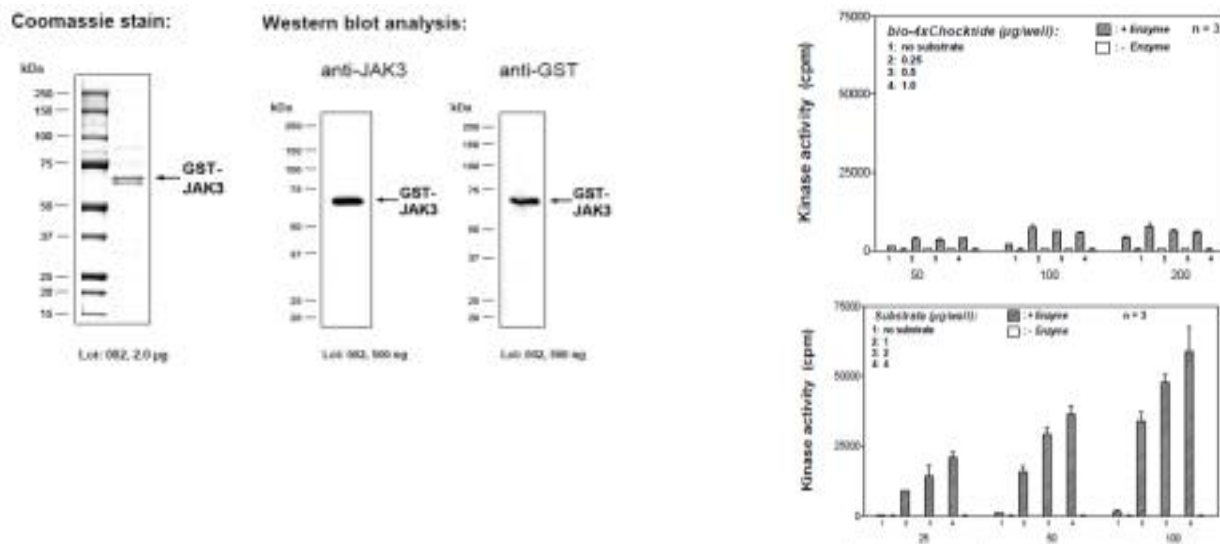


50 µg / ml PEG_{20,000}
 ATP (variable)
 Substrate: Myelin Basic Protein, 2.0 µg / ml
 MST4: 2.0 µg / ml
 • Filter binding assay
 MAFC membrane (Millipore)

Amino Acid Sequence: MSPILGYWKI KGLVQPTRLLEYLEEKYEE HLYERDEGDK WRNKKFELGL EFPNLPYYID GDVKLQSMSA IIRYADKHN MLGGCPKERA EISMLEGAVL DIRYGVSRIA YSKDFETLKV DFLSKLPEML KMFEDRLCHK TYLNGDHVTH PDFMLYDALD VVLYMDPMCL DAFPKLVCFK KRIEAIPQID KYLKSSKYIA WPLQGQWQATF GGDHPPKSD PMHHHHHHGG RRRASVAAGILVPRGSPGLD GIYARGIQAS **MAHSPVAVQV PGMQNNIADP EELFTKLERI GKGSFGVEVK** **GIDNRTQQVV AIKIIDLEEA EDEIEDIQQE ITVLSQCDSS YVTKYYSYL** **KGSKLWIIME YLGGGSALDL LragPFDEFQ IATMLKEILK GLDYHSEKK** **IHRDIKAANV LLSEQGDVKL ADFGVAGQLT DTQIKRNTFV GTPFWMAPEV** **IQQSAYDSKA DIWSLGITAI ELAKGEPNS DMHPMRVFLF IPKNNPPTLV** **GDFTKSFKEF IDACLNKDPS FRPTAKELLK HKFIVKNSKK TSYLTELIDR** **FKRWKAEGHS DDESSEGS DSESTRENNT HPEWSFTTVR KKPDPKQVN** **GAEQDLVQTL SCLSMITPA FAELKQDEN NASRNQAIIE LEKSIAMVAE** **ACPGITDKMV KKLIKVFQKC SADESP**

Storage & Stability: Store in working aliquots at -80°C. **Avoid repeated freeze-thaw cycles.**

Kinase activity MAPKAPK5 (not activated) vs active MAPKAPK5:



NOT FOR HUMAN USE. FOR RESEARCH ONLY. NOT FOR DIAGNOSTIC OR THERAPEUTIC USE.

