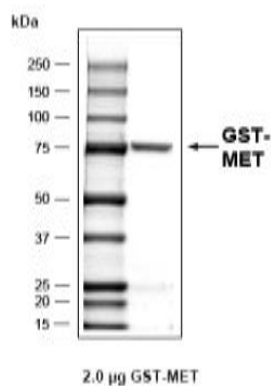


## MET

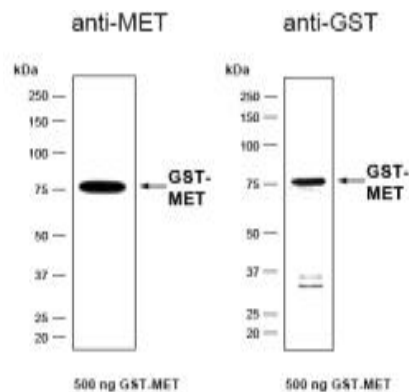
### Recombinant Human Met Proto-Oncogene (aa 956-1390) GST-His Tagged Active

<b>Catalog No.</b>	CRM017	<b>Quantity:</b>	50 µg
<b>Alternate Names:</b>	AUTS9, HGFR, c-Met		
<b>Gene ID:</b>	4233		
<b>Protein Accession No:</b>	NM_000245		
<b>Description:</b>	Recombinant human MET contains amino acids K <sub>956</sub> -S <sub>1390</sub> and N-terminal GST-His tag.		
<b>Concentration:</b>	0.144 mg/ml		
<b>Source:</b>	Sf9 insect cells		
<b>Molecular Weight:</b>	78.79 kDa		
<b>Formulation:</b>	Liquid in 50 mM Tris-HCl, pH 8.0 + 100 mM NaCl + 5 mM DTT + 4 mM reduced glutathione + 20% glycerol		
<b>Purification:</b>	Affinity purified using GSH-agarose		
<b>Specific Activity:</b>	38 pmol/(µg x min). Assay buffer: 60 mM HEPES-NaOH, pH 7.5 + 3 mM MgCl <sub>2</sub> + 3 mM MnCl <sub>2</sub> + 3 µM Na-orthovanadate + 1.2 mM DTT + 2.5 µg/50 µl PEG <sub>20,000</sub> + ATP (variable) + 2.0 µg/50 µl Poly(Ala, Glu, Lys, Tyr) <sub>6:2:5:1</sub> substrate + 50 ng/50 µl recombinant MET.		
<b>Storage &amp; Stability:</b>	Store in working aliquots at -80°C. <b>Avoid repeated freeze-thaw cycles.</b>		

Coomassie stain:



Western Blot analysis:



NOT FOR HUMAN USE. FOR RESEARCH ONLY. NOT FOR DIAGNOSTIC OR THERAPEUTIC USE.



**Cell Sciences®**  
480 Neponset Street  
Bldg 12A  
Canton, MA 02021

Toll Free: 888-769-1246  
Phone: 781-828-0610  
Fax: 781-828-0542

E-mail: [info@cellsciences.com](mailto:info@cellsciences.com)  
Website: [www.cellsciences.com](http://www.cellsciences.com)