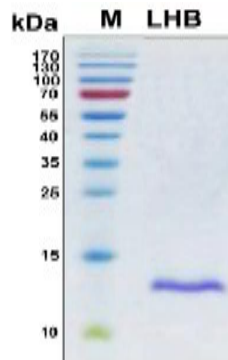


## LHB

### Recombinant Human Luteinizing Hormone subunit beta

<b>Catalog No.</b>	CRL117R	<b>Quantity:</b>	100 µg
<b>Alternate Names:</b>	LHB, Lutropin subunit beta, LSH-beta		
<b>Description:</b>	Recombinant human Luteinizing Hormone subunit beta		
<b>UniProt ID:</b>	P01229		
<b>Gene ID:</b>	3972		
<b>Concentration:</b>	0.3 mg/ml		
<b>Source:</b>	<i>E. coli</i>		
<b>Molecular Weight:</b>	16 kDa, expressed region Ser21 - Leu141, with N-terminal 6X His-tag		
<b>Formulation:</b>	0.45 µm filtered solution containing 100 mM NaH <sub>2</sub> PO <sub>4</sub> , 0.3 M NaCl, 8M urea, pH 7.4		
<b>Purity:</b>	> 90% by SDS-PAGE under reducing conditions, visualized by Coomassie Blue staining.		
<b>Purification:</b>	Immobilized metal ion affinity chromatography (IMAC).		
<b>Endotoxin:</b>	Not determined		
<b>Storage &amp; Stability:</b>	Store as supplied for up to 2 weeks at 2-8°C. Store in working aliquots at -20°C to -80°C up to 1 year. <b>Avoid repeated freeze-thaw cycles.</b>		

SDS-PAGE, reducing conditions



NOT FOR HUMAN USE. FOR RESEARCH ONLY. NOT FOR DIAGNOSTIC OR THERAPEUTIC USE.