

## LTF

### Native Human Lactoferrin, Neutrophil

<b>Catalog No.</b>	CRL103A	<b>Quantity:</b>	100 µg
	CRL103B		1.0 mg

**Alternate Names:** Lactotransferrin, Lactoferrin

**Description:** Human Lactoferrin (LF) also known as Lactotransferrin (LTF) is a multifunctional protein of the transferrin family. It is an iron-binding glycoprotein that facilitates the production of hydroxyl radicals and chelates iron, preventing its accessibility to microorganisms and thus inhibiting growth. It is found in secondary granules of polymorphonuclear neutrophils, lacking terminal fucose residues in the glycan chains that are required for binding to macrophages.

Lactoferrin plays an important role in iron transport and utilization in humans. It is capable of binding two ferric ions with high affinity. Although lactoferrin binds iron tightly, the binding is reversible so that the metal is available upon demand to cells.

**Uniprot ID:** P02788

**Gene ID:** 4057

**Source:** Whole blood

**Molecular Weight:** 78 kDa

**Formulation:** Sterile filtered 100 mM Tris-HCl, 300 mM NaCl, pH 8.0

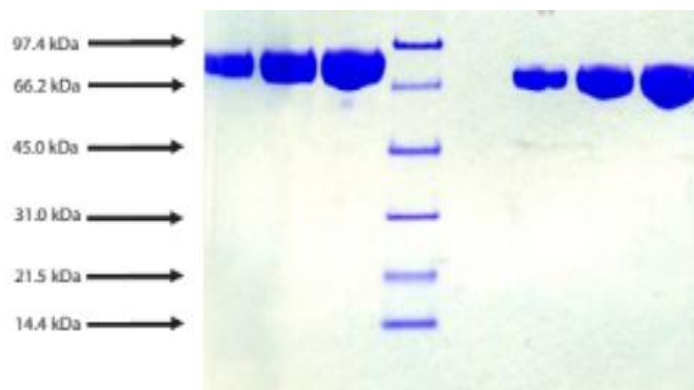
**Purity:** ≥ 95% by SDS-PAGE

**Extinction Coefficient:**  $E^{0.1\%}_{280\text{nm}} = 1.46$

**Storage & Stability:** Store for one year at -80°C.

**Non-Infectious Disease Certification:** Prepared from whole blood shown to be non reactive for HBsAg, anti-HCV, anti-HBc, and negative for anti-HIV 1 & 2 by FDA-required tests.

SDS-PAGE: 4-12% Bis-Tris NuPAGE



NOT FOR HUMAN USE. FOR RESEARCH ONLY. NOT FOR DIAGNOSTIC OR THERAPEUTIC USE.