

SERPINE1

Recombinant Cynomolgus Monkey Plasminogen Activator Inhibitor 1 Active

Catalog No.	CRK002A	Quantity:	500 µg
	CRK002B		1 mg

Alternate Names: PAI, PAI1, PAI-1, PLANH1

Description: Plasminogen Activator Inhibitor 1 ((SERPINE1/PAI1) is the principal inhibitor of Tissue Plasminogen Activator (tPA) and Urokinase (uPA), the activators of Plasminogen and hence fibrinolysis. It is a serine protease inhibitor (serpin) protein (SERPINE1). PAI1 is mainly produced by the endothelium, but is also secreted by other tissue types, such as adipose tissue. Defects in the SERPINE1 gene are the cause of Plasminogen Activator Inhibitor 1 deficiency (PAI1 deficiency), and high concentrations of SERPINE1/PAI1 are associated with Thrombophilia.

Recombinant Cynomolgus Monkey PAI-1 is useful for studies involving this animal model of fibrinolysis and cancer studies.

Concentration: 2.5 mg/ml

Source: *E. coli*

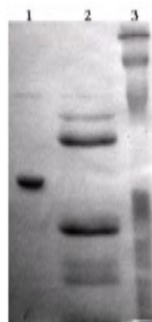
Molecular Weight: 43.0 kDa

Formulation: Frozen liquid in 0.05 M Sodium Phosphate + 0.1M NaCl + 1 mM EDTA, pH 6.6

Purity: >95% by SDS-PAGE

Storage & Stability: Store in working aliquots at -80°C. 3 years from delivery. **Avoid repeated freeze-thaw cycles.**

SDS-PAGE of recombinant cynomolgus monkey PAI-1 active fraction



1. Cyno PAI-1, Wild Type Active (3 ug) R
 2. Cyno PAI-1 (3 ug) + uPA (15 ug) R
 3. Molecular Weight Markers

NOT FOR HUMAN USE. FOR RESEARCH ONLY. NOT FOR DIAGNOSTIC OR THERAPEUTIC USE.



Cell Sciences®
 480 Neponset Street
 Bldg 12A
 Canton, MA 02021

Toll Free: 888-769-1246
 Phone: 781-828-0610
 Fax: 781-828-0542

E-mail: info@cellsciences.com
 Website: www.cellsciences.com