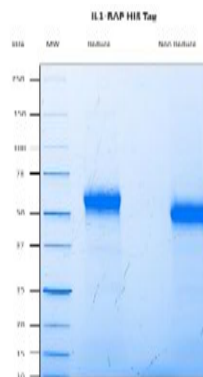


IL1RAP

Recombinant Human IL-1R Accessory Protein, His tag

Catalog No.	CRI238A CRI238B	Quantity:	25 µg 100 µg
Alternate Names:	Interleukin-1 receptor accessory protein, IL-1RAcP, Interleukin-1 receptor 3, IL-1R3		
Description:	<p>IL-1 Receptor Accessory Protein (IL1RAP) is a member of the IL-1 receptor family, a co-receptor of the IL-1 (alpha and beta), IL-33 and IL-36 receptors involved in IL-1 signaling, activating different signaling pathways implicated in inflammation and proliferation. IL1RAP is critical for mediating the effects of IL-33, through the ST2/IL1RAP complex, and IL-36, through the IL-1Rrp2/IL1RAP complex.</p> <p>Human IL1RAP is composed of 3 domains: an extracellular domain (ECD, 347 AA), a transmembrane part (21 AA), and a cytoplasmic domain (182 AA). IL1RAP has been identified as a marker of interest in the context of Chronic Myeloid Leukemia (CML) treatment, activating NK cells and blocking tumor growth. Its over expression is demonstrated in Hematopoietic Stem and Progenitor Cells (HSPC) and also in Acute Myeloid Leukemia (AML) disease.</p>		
UniProt ID:	Q9NPH3.2		
Sequence:	Ser21-Glu359 (extracellular domain) with C-terminal His tag		
Concentration:	1 mg/ml		
Source:	CHO cell line		
Molecular Weight:	40 kDa predicted, 50 kDa apparent on SDS-PAGE		
Formulation:	PBS, carrier and preservative free.		
Purity:	≥ 95% by SDS-PAGE		
Extinction Coefficient:	$E^{0.1\%}_{280nm} = 1.53$, assuming all pairs of Cys residues form cystines		
Purification:	Affinity chromatography		
Identity:	Recognized by CDM524, anti-IL1RAP (clone B-L43) in ELISA		
Storage & Stability:	Store at -20°C to -80°C. Aliquot to avoid repeated freeze/thaw cycles.		

SDS-PAGE 4-15% Coomassie blue, band at approx. 55 and 50 kDa



cellsciences.com

NOT FOR HUMAN USE. FOR RESEARCH ONLY. NOT FOR DIAGNOSTIC OR THERAPEUTIC USE.



Cell Sciences®
65 Parker Street
Unit 11
Newburyport, MA 01950

Toll Free: 888-769-1246
Phone: 978-572-1070
Fax: 978-992-0298

E-mail: info@cellsciences.com
Website: www.cellsciences.com