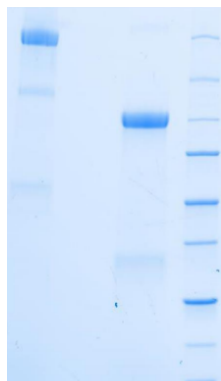


LRRC15

Recombinant Human Leucine-Rich Repeat-Containing Protein 15, Fc tag

Catalog No.	CRI236A CRI236B	Quantity:	25 µg 100 µg
Alternate Names:	Leucine-rich repeat-containing protein 15, LRRC15, LIB protein, hLIB		
Description:	LRRC15 or Leucine-rich repeat-containing protein 15 is a 581 amino acid type I membrane protein with an extracellular domain Met1-Gly538 (517 aa, after removing 21 aa pro-peptide) and with no obvious intracellular signaling domains. It has recently been reported as a marker of cancer-associated fibroblasts. This protein has been found to be highly expressed on CAFs within the tumor stroma of many tumor types, as well as directly on cancer cells in tumors of mesenchymal origin such as sarcomas. Overexpression of LRRC15 is positively correlated with grade and independently associated with adverse outcome. The expression of LRRC15 is upregulated by the pro inflammatory cytokine TGFβ.		
UniProt ID:	Q8TF66		
Sequence:	Met1-Gly538 (extracellular domain) with Human IgG1 Fc (Pro100-Lys33)		
Source:	CHO cell line		
Concentration:	1 mg/ml		
Molecular Weight:	84.8 kDa		
Formulation:	Sterile-filtered PBS, pH 7.4		
Purity:	>95 % by SDS-PAGE		
Purification:	Affinity chromatography		
Identity:	Recognized by anti-LRRC15, CDM543 by ELISA		
Biological Activity:	$E^{0.1\%}_{280nm} = 0.9$, assuming all pairs of Cys residues form cystines		
Storage & Stability:	Store as supplied at -20°C to -80°C for up to 1 year. Upon initial thaw, prepare aliquots and store at -20°C to -80°C for longer term. Avoid repeated freeze-thaw cycles.		

SDS-PAGE 4-15% non-reducing and reducing conditions



cellsciences.com

NOT FOR HUMAN USE. FOR RESEARCH ONLY. NOT FOR DIAGNOSTIC OR THERAPEUTIC USE.



Cell Sciences®
65 Parker Street
Unit 11
Newburyport, MA 01950

Toll Free: 888-769-1246
Phone: 978-572-1070
Fax: 978-992-0298

E-mail: info@cellsciences.com
Website: www.cellsciences.com