

IL17A

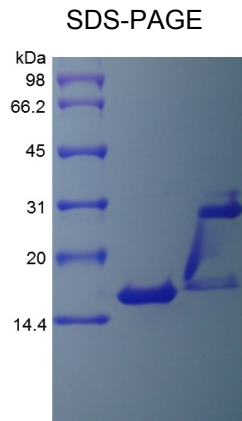
Recombinant Human Interleukin-17A

Catalog No.	CRI162A CRI162B CRI162C	Quantity:	5 µg 25 µg 1.0 mg
Alternate Names:	CTLA-8, IL17A, IL-17, Cytotoxic T-lymphocyte-associated antigen 8		
Description:	<p>Recombinant Human Interleukin-17A is a disulfide-linked homodimer of two 132 amino acid polypeptide chains.</p> <p><i>Background:</i> Human Interleukin 17A (IL-17A) is encoded by the IL17A gene located on chromosome 6 and belongs to the IL-17 family that contains IL-17A, IL-17B, IL-17C, IL-17D, IL-17E and IL-17F. They have a similar protein structure, with four highly conserved cysteine residues critical to their 3-dimensional shape, but no sequence similarity to any other known cytokines. Interleukin 17 is a T cell-expressed pleiotropic cytokine that exhibits a high degree of homology so a protein encoded by the ORF13 gene of herpesvirus Saimiri. Mature IL-17 contains one potential N-linked glycosylation site. Both recombinant and natural IL-17 have been shown to exist as disulfide linked homodimers. At the amino acid level, IL-17 exhibits 63% amino acid identity with mouse IL-17. High levels of human IL-17 were induced from primary peripheral blood CD4+ T cells upon stimulation and they can induce stromal cells to produce proinflammatory and hematopoietic cytokines.</p>		
Gene ID:	3605		
Source:	<i>E. coli</i>		
Molecular Weight:	31.0 kDa		
Formulation:	Lyophilized from a 0.2 µm sterile filtered solution in PBS, pH 7.4		
Purity:	>95% by HPLC and SDS-PAGE		
Endotoxin Level:	<1 EU/µg as determined by LAL method.		
Biological Activity:	Fully biologically active when compared to standard. The ED ₅₀ as determined by inducing IL-6 secretion by mouse NIH/3T3 cells is less than 7.5 ng/ml, corresponding to a specific activity of >1.3 x 10 ⁵ units/mg.		
Specific Activity:	>1.3 x 10 ⁵ units/mg		
Amino Acid Sequence:	GITIPRNP GC P N S E D K N F P R T V M V N L N I H N R N T N T N P K R S S D Y Y N R S T S P W N L H R N E D P E R Y P S V I W E A K C R H L G C I N A D G N V D Y H M N S V P I Q Q E I L V L R R E P P H C P N S F R L E K I L V S V G C T C V T P I V H H V A		
Reconstitution:	Centrifuge vial prior to opening. Add sterile distilled water or aqueous buffer to a concentration of 0.1-1.0 mg/ml. Further dilutions should be made in appropriate buffered solutions.		



Storage & Stability:

This lyophilized preparation is stable at 2-8°C. Upon receipt, store desiccated at -20°C. After reconstitution, the preparation is stable for up to one week at 2-8°C. For maximal stability, apportion the reconstituted preparation into working aliquots and store at -20°C to -80°C. For long term storage of reconstituted protein, it is recommended that a carrier protein such as 0.1% BSA or HSA be added. This depends on the particular application. **Avoid repeated freeze/thaw cycles.**



NOT FOR HUMAN USE. FOR RESEARCH ONLY. NOT FOR DIAGNOSTIC OR THERAPEUTIC USE.

