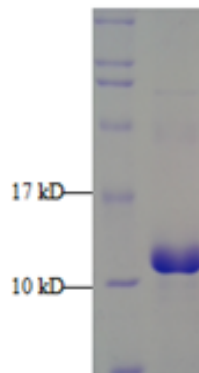


Recombinant Human Procalcitonin

Catalog No.	CRH350	Quantity:	1 mg
Alternate Names:	PCT		
Description:	Procalcitonin (PCT) belongs to the calcitonin (CT) superfamily of peptides. It can be divided into 3 sections including the amino terminus of the PCT region, immature calcitonin, and calcitonin carboxyl-terminus peptide-1 (CCP-1, also called katalcalcin). Procalcitonin exhibits greater specificity than other proinflammatory markers, IL-6, IL-1 beta, CRP, TNF-alpha, in identifying patients with sepsis. Its short half-life (25–30 hours in plasma) coupled with its virtual absence in health and specificity for bacterial infections, gives it a clear advantage over the other markers of bacterial infection.		
Source:	<i>E. coli</i>		
Molecular Weight:	14.5 kDa, 116 aa + 6xHis-tag		
Formulation:	50 mM Tris-HCl, 150 mM NaCl, pH 8.0 and 10% glycerol		
Purity:	> 95% by SDS-PAGE		
Applications:	ELISA, Western Blot, Immunogen		
Amino Acid Sequence:	MAPFRSALESSPADPATLSEDEARLRLAALVQDYVQMKASELEQEQEREGSSLDSPRS KRCGNLSTCMLGTYTQDFNKFHTFPQTAIGVGAPGKKRDMSSDLERDHRPHVSM PQN ANLEHHHHHH		
Storage & Stability:	Short term (\leq week) 2-8°C. Prepare working aliquots and store at -20°C to -80°C. Avoid repeated freeze/thaw cycles.		



NOT FOR HUMAN USE. FOR RESEARCH ONLY. NOT FOR DIAGNOSTIC OR THERAPEUTIC USE.

