

Recombinant Human Galectin-3

Catalog No.	CRH305A	Quantity:	10 µg
	CRH305B		100 µg
	CRH305C		1 mg

Alternate Names: Galactose-specific lectin-3, IgE-binding protein, MAC2, L-29, CPB-35

Description: Galectin-3 belongs to the lectin family of carbohydrate binding proteins. Galectin-3 is expressed by a wide range of cell types including activated T cells, tumor cells, macrophages, osteoclasts, fibroblasts, and epithelial cells. Galectin-3 has specific binding affinity for beta-galactoside sugar moieties and has functional roles during development, innate immunity, cell apoptosis, and tumor metastasis. Galectin-3 is associated with cancer, heart failure, stroke, and inflammation. The amino acid sequences of human and mouse Galectin-3 proteins share 80% homology.

Protein Accession No: P17931

Source: *E. coli*

Molecular Weight: Monomer, 26.2 kDa (250 aa)

Formulation: Lyophilized from a sterile-filtered solution containing 10 mM sodium phosphate, 50 mM sodium chloride, pH 7.5

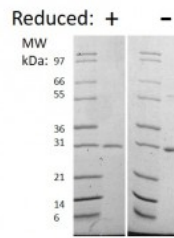
Purity: ≥95% by reducing and non-reducing SDS-PAGE

Endotoxin Level: ≤ 0.1 EU/µg by kinetic LAL analysis

Amino Acid Sequence: MADNFSLHDA LSGSGNPNPQ GWPGAWGNQP AGAGGYPGAS YPGAYPGQAP
PGAYPGQAPP GAYPGAPGAY PGAPAPGVYP GPPSGPGAYP SSGQPSATGA
YPATGPYGAP AGPLIVPYNL PLPGGVVPRM LITILGTVKP NANRIALDFQ
RGNDVAFHFN PRFNENRRRV IVCNTKLDNN WGREERQSVF PFESGKPFKI
QVLVEPDHFK VAVNDAHLLQ YNHRVKKLNE ISKLGISGDI DLTSASYTMI

Reconstitution: **Centrifuge vial prior to opening.** Add sterile distilled water to reconstitute to a recommended concentration of 0.1 mg/mL and gently pipet solution up and down sides of vial. **DO NOT VORTEX.** Allow several minutes for reconstitution. A small amount of precipitate may be seen.

Storage & Stability: **Upon receipt,** store desiccated at -20°C for up to one year. **Upon reconstitution,** the preparation is stable for up to one month at 2-8°C. **For long term storage,** reconstitute in working aliquots in 0.1% BSA solution and store at -80°C. **Avoid repeated freeze-thaw cycles.** □



Human Galectin-3

Figure: 1 ug under (+) reducing and (-) non-reducing conditions in a 4-20% Tris-Glycine gel, stained with Coomassie Blue. Human Galectin-3 has a predicted MW of 26.2 kDa.

NOT FOR HUMAN USE. FOR RESEARCH ONLY. NOT FOR DIAGNOSTIC OR THERAPEUTIC USE.



Cell Sciences®
65 Parker Street
Unit 11
Newburyport, MA 01950

Toll Free: 888-769-1246
Phone: 978-572-1070
Fax: 978-992-0298

E-mail: info@cellsciences.com
Website: www.cellsciences.com