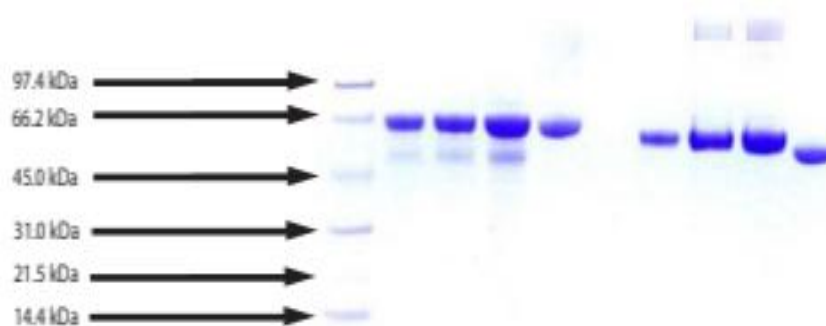


HPX

Native Human Hemopexin

Catalog No.	CRH114A CRH114B CRH114C	Quantity:	100 µg 500 µg 1.0 mg
Alternate Names:	Hemopexin, Beta-1B-glycoprotein, HPX, Haemopexin.		
Description:	Hemopexin is a single-chain protein belonging to the family of blood transport proteins. It binds to heme released into the bloodstream during the degradation process. Recent studies have demonstrated that hemopexin acts as an extracellular antioxidant against hemoglobin-mediated damage in inflammation. Hemopexin protects against heme toxicity and conserves and recycles iron. Abnormal levels of hemopexin are associated with hemolytic anemia, chronic neuromuscular disease, and acute intermittent porphyria.		
UniProt ID:	P02790		
Source:	Human plasma		
Molecular Mass:	57 kDa		
Formulation:	Lyophilized from 12 mM phosphate buffer, 137 mM NaCl and 2.7 mM KCl, pH 7.4.		
Purity:	≥ 95% by SDS-PAGE		
Extinction Coefficient:	$E^{0.1\%}_{280\text{nm}} = 1.97$		
Reconstitution:	Centrifuge vial prior to opening. Add sterile distilled water to a concentration of 0.1 -1.0 mg/mL and gently pipette the solution up and down the sides of the vial. DO NOT VORTEX. Allow several minutes for complete reconstitution.		
Storage & Stability:	Store unopened at -20°C to -80°C for up to 1 year. For long term storage, aliquot and store at -20°C to -80°C. Avoid repeated freeze-thaw cycles.		
Infectious Disease Statement:	Prepared from plasma shown to be non reactive for HBsAg, anti-HCV, anti-HBc, and negative for anti-HIV 1 & 2 by FDA-required tests.		

SDS-PAGE: 4-12% Bis-Tris NuPAGE
reduced & non-reduced



NOT FOR HUMAN USE. FOR RESEARCH ONLY. NOT FOR DIAGNOSTIC OR THERAPEUTIC USE.