

## HCK

### Recombinant Human Hemopoietic Cell Kinase GST

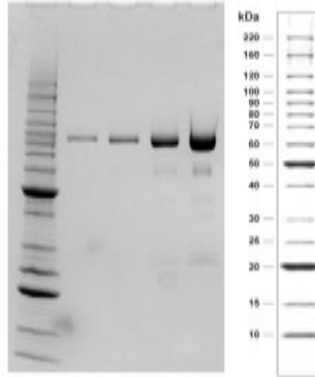
|                              |  |                  |       |
|------------------------------|--|------------------|-------|
| <b>Catalog No.</b>           | CRH014   | <b>Quantity:</b> | 10 µg |
| <b>Alternate Names:</b>      | JTK9   |                  |       |
| <b>Description:</b>          | Full length recombinant human hemopoietic cell kinase with an N terminal GST tag. No special measures were taken to activate this kinase.  |                  |       |
| <b>Concentration:</b>        | Measured using the Bradford protein assay with BSA as a standard.  |                  |       |
| <b>Gene ID:</b>              | 3055   |                  |       |
| <b>Protein Accession No:</b> | NP_002101  |                  |       |
| <b>Source:</b>               | Insect cells   |                  |       |
| <b>Molecular Weight:</b>     | 84.8 kDa   |                  |       |
| <b>Formulation:</b>          | Frozen liquid containing 50 mM Tris-HCl, pH 7.5, + 150 mM NaCl + 0.5 mM EDTA + 0.02% NP-40 + 2 mM DTT + 50% glycerol.  |                  |       |
| <b>Purity:</b>               | 90% as determined by SDS-PAGE.   |                  |       |
| <b>Specific Activity:</b>    | 7060 nmoles of phosphate transferred to Tyrosine Kinase Peptide 1 (KVEKIGEGTYGVVYK) per minute per mg of total protein at 30°C. Activity determined at a final protein concentration of 0.17 µg/ml.  |                  |       |
| <b>Amino Acid Sequence:</b>  | <p><u>MAPILGYWKI KGLVQPTRLLEYLEEKYEE HLYERDEGDK WRNKKFELGL</u><br/> <u>EFPNLPYYID GDVKLTQSMA IIRYIADKHN MLGGCPKERA EISMLEGAVL</u><br/> <u>DIRYGVSRIA YSKDFETLKV DFLSKLPEML KMFEDRLCHK TYLNGDHVTH</u><br/> <u>PDFMLYDALD VVLYMDPMCL DAFPKLVCFK KRIEAIPOID KYLKSSKYIA</u><br/> <u>WPLQGQWQATF GGGDHPPKSD LVPRHNQTSL YKKAGTMGCM KSKFLQVGGN</u><br/> <u>TFSKTETSAS PHCPVYVPDP TSTIKPGPNS HNSNTPGIRE AGSEDIIVVA</u><br/> <u>LYDYEAIHHE DLSFQKGDQM VVLEESGEWW KARSLATRKE GYIPSNYVAR</u><br/> <u>VDSLETEEWF FKGISRKDAE RQLLAPGNML GSFMIRDSET TKGSYSLSVR</u><br/> <u>DYDPRQGDTV KHYKIRTLDN GGFYISPRST FSTLQELVDH YKKGNDGLCQ</u><br/> <u>KLSVPCMSSK PQKPWEKDAW EIPRESLKLE KKLGGAGQFGE VWMATYNKHT</u><br/> <u>KVAVKTMKPG SMSVEAFLAE ANVMKTLQHD KLVKLHAVVT KEPIYIITEF</u><br/> <u>MAKGSLLDFL KSDEGSKQPL PKLIDFSAQI AEGMAFIEQR NYIHRDLRAA</u><br/> <u>NILVSASLVC KIADFGLARV IEDNEYTARE GAKFPIKWTA PEAINFGSFT IKSDVWSFGI</u><br/> <u>LLMEIVTYGR IPYPGMSNPE VIRALERGYR MPRPENCPPEE</u><br/> <u>LYNIMMRCWK NRPEERPTFE YIQSVLDDFY TATESQYQQQ P</u></p> |                  |       |



**Storage & Stability:**

Store at -80°C. For maximum recovery please spin prior to use. Please never store a kinase diluted. Product can be used in original packaging until exhausted. If properly stored at -80°C, this product is guaranteed for 6 months from date of purchase. **Avoid repeated freeze-thaw cycles.**

SDS-PAGE run on 4-20% Tris-Glycine gel. Lane 1: MW markers. Lanes 2-5: 1, 2, 5, and 10 µg HCK



**NOT FOR HUMAN USE. FOR RESEARCH ONLY. NOT FOR DIAGNOSTIC OR THERAPEUTIC USE.**

