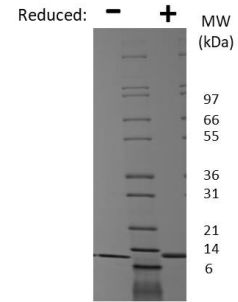
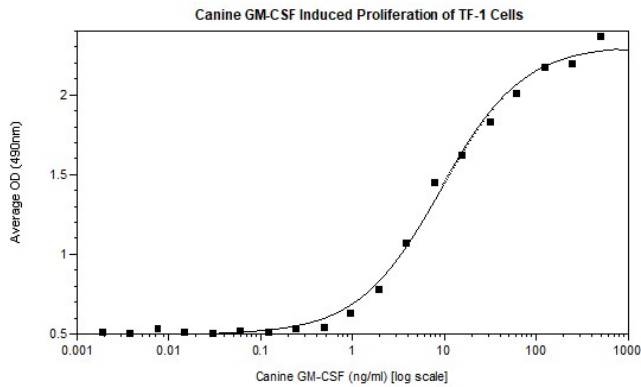


## CSF2

### Canine GM-CSF

<b>Catalog No.</b>	CRG116A CRG116B CRG116C	<b>Quantity:</b>	20 µg 100 µg 1 mg
<b>Alternate Names:</b>	CSF-2, Pluripoietin-α, MGI-1GM		
<b>Description:</b>	Granulocyte-macrophage colony-stimulating factor (GM-CSF) is a hematopoietic growth factor produced by endothelial cells, monocytes, fibroblasts, and T cells. GM-CSF stimulates the production of neutrophilic granulocytes, macrophages, and mixed granulocyte-macrophage colonies from bone marrow cells. GM-CSF promotes immune system development and regulates neutrophil function during infection.		
<b>GeneID:</b>	403923		
<b>UniProt ID:</b>	P48749		
<b>Source:</b>	<i>E.coli</i> <b>Manufactured without Animal-derived products, in an Animal Free facility.</b>		
<b>Molecular Weight:</b>	Monomer, 14.4 kDa (with 128 amino acids)		
<b>Formulation:</b>	Lyophilized from a sterile filtered aqueous solution containing 10 mM sodium phosphate, pH 7.5		
<b>Purity:</b>	≥ 95% by reducing and non-reducing SDS-PAGE		
<b>Endotoxin Level:</b>	≤ 1 EUs/µg by kinetic LAL		
<b>Biological Activity:</b>	ED <sub>50</sub> ≤ 15 ng/ml, determined by TF-1 cell proliferation.		
<b>Specific Activity:</b>	≥ 6.7 x 10 <sup>4</sup> units/mg		
<b>Amino Acid Sequence:</b>	MAPTRSPTLV TRPSQHVD AI QEAL SLLNNS NDVTAVMNKA VKV VSEVFDP EGPTCLETRL QLYKEGLQGS LTSLKNPLTM MANHYKQHCP PTPESPCATQ NINFKSFKEN LKDFLFNIPF DCWKPVKK		
<b>Reconstitution:</b>	Add sterile water at 0.1 mg/ml. Centrifuge vial before opening. Suspend the product by gently pipetting the above recommended solution down the sides of the vial. <b>DO NOT VORTEX.</b> Allow several minutes for complete reconstitution. For prolonged storage, dilute to working aliquots in a 0.1% BSA solution, store at -80°C and avoid repeat freeze thaws.		
<b>Storage &amp; Stability:</b>	Store as supplied at -20°C to -80°C for up to 1 year. Upon reconstitution, prepare working aliquots and store at -20°C to -80°C. It is recommended that a carrier protein such as 0.1% HSA or BSA is added for long term storage. <b>Avoid repeated freeze-thaw cycles.</b>		





#### Canine GM-CSF Gel

Figure: 1 ug run under (-) non-reducing conditions and (+) reducing conditions in a 4-20% Tris-Glycine gel, stained with Coomassie Blue. Canine GM-CSF is predicted to have a MW of 14.4 kDa.

**NOT FOR HUMAN USE. FOR RESEARCH ONLY. NOT FOR DIAGNOSTIC OR THERAPEUTIC USE.**



**Cell Sciences®**  
65 Parker Street  
Unit 11  
Newburyport, MA 01950

Toll Free: 888-769-1246  
Phone: 978-572-1070  
Fax: 978-992-0298

E-mail: [info@cellsciences.com](mailto:info@cellsciences.com)  
Website: [www.cellsciences.com](http://www.cellsciences.com)