

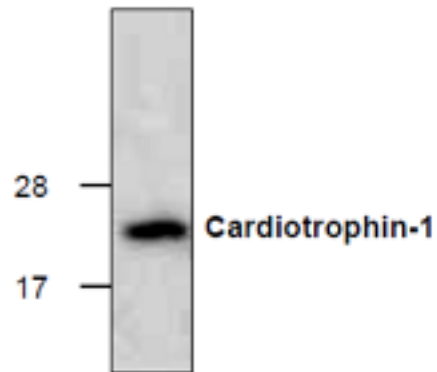
CTF1

Recombinant Human Cardiotrophin-1

Catalog No.	CRC700A CRC700B CRC700C	Quantity:	10 µg 100 µg 500 µg
Alternate Names:	Cardiotrophin-1, CT-1		
Description:	Cardiotrophin-1 (CT-1) is a member of the cytokine family which also includes IL-6, IL-11, leukemia inhibitory factor (LIF), oncostatin M (OSM), and ciliary neurotrophic factor (CNTF). CT-1 is a pleiotropic cytokine which is expressed in various tissues including the adult heart, skeletal muscle, ovary, colon, prostate and fetal lung. Studies showed CT-1 which induces cardiac myocyte hypertrophy in vitro can bind to and activate the ILST/gp130 receptor. Human CT-1 encodes a 201 amino acid (a.a.) residue protein that lacks a hydrophobic signal peptide and it shares 78 % a.a. and 80 % a.a. sequence identity with murine and rat CT-1.		
UniProt ID:	Q16619		
Source:	<i>E. coli</i>		
Molecular Weight:	21.2 kDa (201 aa) monomer		
Formulation:	Lyophilized from a sterile filtered aqueous solution containing 30% acetonitrile, 0.1% TFA		
Purity:	> 95% by SDS-PAGE and RP-HPLC		
Biological Activity:	ED ₅₀ <1.0 ng/ml, determined by a cell proliferation assay using human TF-1 cells.		
Specific Activity:	> 1.0 x 10 ⁶ IU/mg		
Amino Acid Sequence:	MSRREGSLED PQT DSSVSL LPHLEAKIRQT HSLAHL LTKY AEQL LQEYVQ LQGD PFG LPS FSP PRLPVAG LSAPAP SHAG LPVHER LRLD AAAL AALPPL LDAVC RRQAE LNPRAP RLLR RLEDAARQAR ALGAAVEALL AALGAANRGP RAEPPAATAS AASATGVFPA KVLGLRVCGL YREWLSRTEG DLGQLLP GGS A		
Reconstitution:	Centrifuge the vial prior to opening. Reconstitute in sterile 4 mM HCl not less than 0.10 mg/mL. The solution can be further diluted to other aqueous buffers.		
Storage & Stability:	Store lyophilized protein at -20 °C to -80 °C for up to 1 year. Upon reconstitution store at 2-8 °C for up to one week, or long term in aliquots -80 °C. It is recommended to add a carrier protein (0.1% HSA or BSA) for long-term storage. Avoid repeated freeze-thaw cycles.		



The purity of Recombinant Human Cardiotrophin-1 (2 μ g) was analyzed by SDS-PAGE



NOT FOR HUMAN USE. FOR RESEARCH ONLY. NOT FOR DIAGNOSTIC OR THERAPEUTIC USE.



Cell Sciences®
65 Parker Street
Unit 11
Newburyport, MA 01950

Toll Free: 888-769-1246
Phone: 978-572-1070
Fax: 978-992-0298

E-mail: info@cellsciences.com
Website: www.cellsciences.com