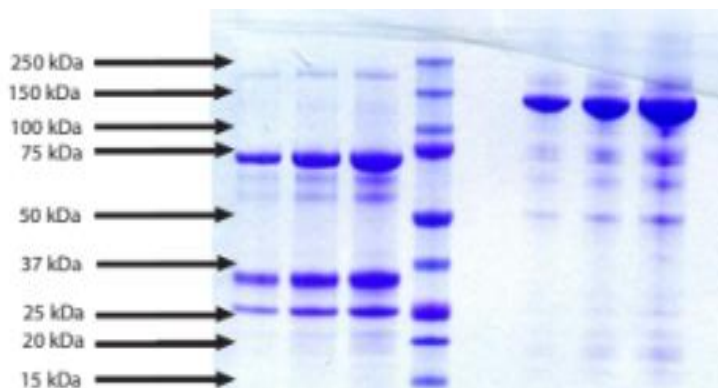


C4B

Native Human Complement C4c

Catalog No.	CRC163B CRC163C	Quantity:	1.0 mg 10 mg
Alternate Names:	Complement C4-B, Basic complement C4		
Description:	Complement C4 (C4) plays a central role in both the classical and lectin pathways of complement activation, with levels in human plasma ~0.4 mg/ml. C4 circulates in human plasma as a heterotrimer of 205 kDa in plasma, α (93 kDa), β (78 kDa), and γ (33 kDa). During complement activation, C4 is cleaved by the serine protease C1s to C4a (9 kDa) and C4b (190 kDa). C4b is further cleaved by factor I to C4d (45 kDa) and C4c (140 kDa). The current protocol yields C4c, however intact C4 and/or C4b and C4d may be co-purified.		
UniProt ID:	P0C0L5		
Gene ID:	721		
Source:	Human Plasma		
Molecular Weight:	147 kDa		
Formulation:	PBS, pH 7.4		
Purity:	$\geq 85\%$ by SDS-PAGE		
Biological Activity:	No activity		
Application Notes:	Western blot: reacts with C4 antisera		
Storage & Stability:	Store as supplied at -80°C for up to 1 year.		
Infectious Disease Statement:	Prepared from plasma shown to be non reactive for HBsAg, anti-HCV, anti-HBc, and negative for anti-HIV 1 & 2 by FDA-required tests.		

SDS-PAGE: 4-12% Bis-Tris NuPAGE



NOT FOR HUMAN USE. FOR RESEARCH ONLY. NOT FOR DIAGNOSTIC OR THERAPEUTIC USE.