

CLK1

Recombinant Human CDC-like Kinase 1 Active GST-His

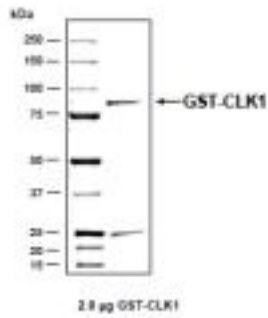
Catalog No.	CRC047	Quantity:	50 µg
Alternate Names:	CLK, CLK/STY, STY, CDC28/CDC2-like kinase, dual specificity protein kinase CLK1, protein tyrosine kinase STY		
Description:	Human CLK1, full length, amino acids M ₁ -I ₄₈₄ (as in GenBank entry NM_004071.2)*, N-terminally fused to GST-HIS ₆ -Thrombin cleavage site, expressed in Sf9 insect cells. *Sequence may contain documented polymorphisms. Detailed sequence on request		
Concentration:	0.139 µg/µl		
Gene ID:	1195		
Protein Accession No:	NM_004071.2		
Source:	Baculovirus infected Sf9 cells		
Molecular Weight:	Theoretical MW _{Fusion Protein} : 86,695 Da		
Formulation:	50 mM Tris-HCl + pH 8.0 + 100 mM NaCl + 5 mM DTT + 4 mM reduced glutathione, 20% glycerol		
Purification:	One-step affinity purification using GSH-agarose		
Product Identity:	CLK1, was confirmed as CLK1 by mass spectroscopy LC-ESI-MS/MS		
Specific Activity:	0.4 pmol/µg×min Method for determination of K _m value and specific activity: • Assay conditions: 60 mM HEPES-NaOH, pH 7.5 3 mM MgCl ₂ 3 mM MnCl ₂ 3 µM Na-orthovanadate 1.2 mM DTT 2.5 µg / 50 µl PEG _{20,000} ATP (variable) Substrate: RS-peptide (RSRSRSRSRSR), 2 µg / 50 µl CLK1: 200 ng / 50 µl • Filter binding assay MSPH membrane (Millipore)		



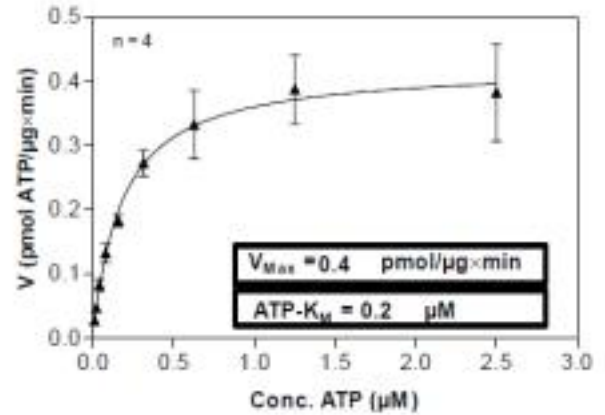
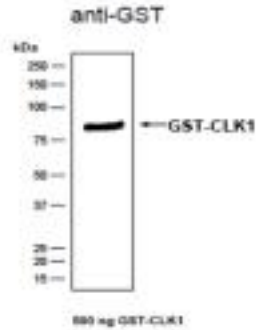
Storage & Stability: Store in working aliquots at -80°C . **Avoid repeated freeze-thaw cycles.**

Determination of K_m value for ATP:

Coomassie stain:



Western blot analysis:



NOT FOR HUMAN USE. FOR RESEARCH ONLY. NOT FOR DIAGNOSTIC OR THERAPEUTIC USE.



Cell Sciences[®]
480 Neponset Street
Bldg 12A
Canton, MA 02021

Toll Free: 888-769-1246
Phone: 781-828-0610
Fax: 781-828-0542

E-mail: info@cellsciences.com
Website: www.cellsciences.com