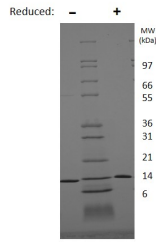


## BDNF

### Recombinant Human Brain-Derived Neurotrophic Factor

<b>Catalog No.</b>	CRB600B CRB600C CRB600D	<b>Quantity:</b>	10 µg 1.0 mg 100 µg
<b>Alternate Names:</b>	BDNF, Abrineurin, ANON2, BULN2		
<b>Description:</b>	Brain Derived Neurotrophic Factor, or BDNF, is a nerve growth factor that supports neuron growth and survival. BDNF shares identical domains with two other neurotrophic factors known as, β-NGF and NT-3 (neurotrophin-3). BDNF binds with low affinity to a receptor known as LNGFR, which also binds NGF and NT-3, but mediates survival function by signaling through a high affinity receptor known as gp145/TrkB. Human, mouse, rat and pig BDNF are all cross-reactive.		
<b>Gene ID:</b>	627		
<b>UniProt ID:</b>	P23560		
<b>Source:</b>	<i>E. coli</i>		
<b>Molecular Weight:</b>	Homodimer (non-covalent), 13.6/27.3 kDa (120/240 aa)		
<b>Formulation:</b>	Lyophilized from a sterile filtered solution containing 0.1% Trifluoroacetic Acid (TFA).		
<b>Purity:</b>	> 95% by reducing and non-reducing SDS-PAGE		
<b>Endotoxin Level:</b>	≤ 0.1 EU/µg by kinetic LAL		
<b>Biological Activity:</b>	ED <sub>50</sub> ≤ 40 ng/ml, determined by the dose dependent proliferation of a neuroblastoma cell line stably expressing TrkB (BR6)		
<b>Specific Activity:</b>	≥ 2.5 x 10 <sup>4</sup> units/mg		
<b>Amino Acid Sequence:</b>	MHSDPARRGE LSVCDISEW VTAADKKTAV DMSGGTVTVL EKVPVSKGQL KQYFYETKCN PMGYTKEGCR GIDKRHWNSQ CRTTQSYVRA LTMDSKKRIG WRFIRIDTSC VCTLTIKRGR		
<b>Reconstitution:</b>	<b>Centrifuge vial prior to opening.</b> Add sterile distilled water to a recommended concentration of 0.1 mg/mL and gently pipet solution up and down sides of vial. <b>DO NOT VORTEX.</b> Allow several minutes for complete reconstitution.		
<b>Storage &amp; Stability:</b>	Store as supplied at -20°C to -80°C for up to 1 year. Upon reconstitution, prepare working aliquots and store at -20°C to -80°C. It is recommended that a carrier protein such as 0.1% HSA or BSA is added for long term storage. <b>Avoid repeated freeze-thaw cycles.</b>		



#### Human BDNF Gel

Figure: 1 ug in each lane (-) non-reducing conditions and (+) reducing conditions in a 4-20% Tris-Glycine gel, stained with Coomassie Blue. Human BDNF is a non-covalently linked homodimer and has a predicted MW of 27.3 kDa.

**NOT FOR HUMAN USE. FOR RESEARCH ONLY. NOT FOR DIAGNOSTIC OR THERAPEUTIC USE.**



**Cell Sciences®**  
65 Parker Street  
Unit 11  
Newburyport, MA 01950

Toll Free: 888-769-1246  
Phone: 978-572-1070  
Fax: 978-992-0298

E-mail: [info@cellsciences.com](mailto:info@cellsciences.com)  
Website: [www.cellsciences.com](http://www.cellsciences.com)