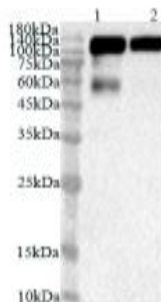


ACE2

Mouse Anti-Human ACE2, mAb

Catalog No.	CPC532A CPC532B	Quantity:	50 µg 100 µg
Alternate Names:	Angiotensin-converting enzyme 2, Angiotensin-converting enzyme homolog, ACEH, Angiotensin-converting enzyme-related carboxypeptidase, ACE-related carboxypeptidase, Metalloprotease MPROT15		
Description:	This antibody was produced from a hybridoma resulting from the fusion of a mouse myeloma with B cells obtained from a mouse immunized with purified, recombinant Human ACE2 / Angiotensin-Converting Enzyme 2.		
UniProt ID:	Q9BYF1		
Immunogen:	Recombinant Human ACE2 protein		
Specificity:	Recognizes Human ACE2 protein		
Isotype:	Mouse IgG1		
Concentration:	1.0 mg/ml		
Formulation:	Sterile-filtered PBS, pH 7.4 containing 0.02% NaN ₃ , 50% glycerol.		
Purification:	Protein A affinity chromatography		
Applications:	IHC: 1:1,000 - 1:4,000 Western blot: suggested dilution 1:2,000 - 1:6,000		
Storage & Stability:	Stable at 2-8°C for 1 week or for up to 1 year at -20°C to -80°C. It is recommended to prepare working aliquots of undiluted product and store -20°C to -80°C.		



Lysate: 20µg/lane
Lane 1: mouse kidney
Lane 2: mouse testis

Predicted band size: 110kDa
Observed band size: 110kDa

Various lysates were subjected to SDS PAGE followed by western blot with ACE2 antibody at dilution of 1:2000.

NOT FOR HUMAN USE. FOR RESEARCH ONLY. NOT FOR DIAGNOSTIC OR THERAPEUTIC USE.



Cell Sciences®
65 Parker Street
Unit 11
Newburyport, MA 01950

Toll Free: 888-769-1246
Phone: 978-572-1070
Fax: 978-992-0298

E-mail: info@cellsciences.com
Website: www.cellsciences.com