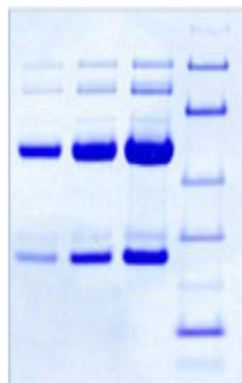


Native Canine Immunoglobulin G

Catalog No.	CND003A CND003B	Quantity:	5 mg 50 mg
Alternate Names:	Immunoglobulin G, IgG		
Description:	Purified IgG from normal canine plasma from non-immunized animals.		
Source:	Canine plasma		
Molecular Weight:	150 kDa		
Formulation:	Lyophilized from 20 mM PBS, 150 mM NaCl, pH 7.4, 0.09% NaN ₃		
Purity:	>95 % by SDS-PAGE analysis		
Extinction Coefficient:	$E^{0.1\%}_{280\text{nm}} = 1.36$		
Applications:	ELISA, Western Blot		
Reconstitution:	Centrifuge vial prior to opening. Add sterile distilled water to a concentration of 0.1 -1.0 mg/mL and gently pipette the solution up and down the sides of the vial. DO NOT VORTEX. Allow several minutes for complete reconstitution.		
Storage & Stability:	Store at -20°C to -80°C for at least 1 year. Upon reconstitution, prepare aliquots and store at -80°C. Avoid repeated freeze-thaw cycles.		
Country of Origin:	USA		

SDS-PAGE



NOT FOR HUMAN USE. FOR RESEARCH ONLY. NOT FOR DIAGNOSTIC OR THERAPEUTIC USE.