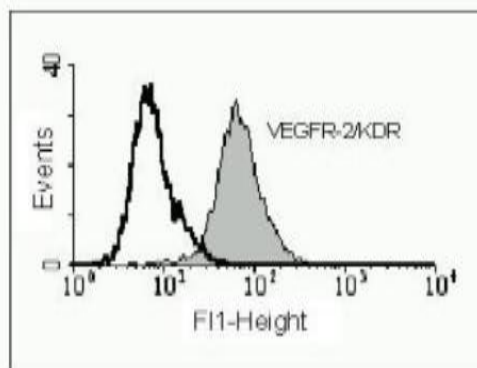


KDR

Mouse Anti-Human VEGFR-2/KDR Clone #3(4H3) mAb, Biotin

Catalog No.	CMV012BT	Quantity:	100 µg
Alternate Names:	FLK1, CD309, VEGFR, VEGFR2		
Description:	Vascular endothelial growth factor (VEGF) is a major growth factor for endothelial cells. VEGF receptor 2 is one of the two receptors of the VEGF. This receptor, known as kinase insert domain receptor, is a type III receptor tyrosine kinase. It functions as the main mediator of VEGF-induced endothelial proliferation, survival, migration, tubular morphogenesis and sprouting. The signaling and trafficking of this receptor are regulated by multiple factors, including Rab GTPase, P2Y purine nucleotide receptor, integrin alphaVbeta3, and T-cell protein tyrosine phosphatase.		
Gene ID:	3791		
Specificity:	Detects Native Human KDR/VEGFR-2 on the surface of different human cell types.		
Immunogen:	Recombinant Human soluble extracellular KDR (D7)		
Isotype:	Mouse IgG1		
Clone:	#3(4H3)		
Conjugate:	Biotin		
Formulation:	Lyophilized from a 0.2 µm sterile filtered 0.1M Tris-Cl, 0.2M NaCl, 0.02% NaN ₃ buffer solution (pH 7.4), containing 50 µg BSA per 1 µg antibody.		
Purification:	Protein G chromatography		
Reconstitution:	Centrifuge vial prior to opening. Add sterile distilled water for a concentration of 0.1 -1.0 mg/ml.		
Applications:	FACS: suggested concentration 2-5 µg/ml. Optimal dilution should be determined by each laboratory for each application.		
Storage & Stability:	Store lyophilized at -20°C for up to 1 year. Following reconstitution, stable for at least two weeks at 2-8°C or at least 6 months when stored at -20°C. Avoid repeated freeze-thaw cycles.		

Flow cytometry of human umbilical vein endothelial cells (HUVECs) using Clone 4H3



cellsciences.com

NOT FOR HUMAN USE. FOR RESEARCH ONLY. NOT FOR DIAGNOSTIC OR THERAPEUTIC USE.



Cell Sciences®
65 Parker Street
Unit 11
Newburyport, MA 01950

Toll Free: 888-769-1246
Phone: 978-572-1070
Fax: 978-992-0298

E-mail: info@cellsciences.com
Website: www.cellsciences.com