

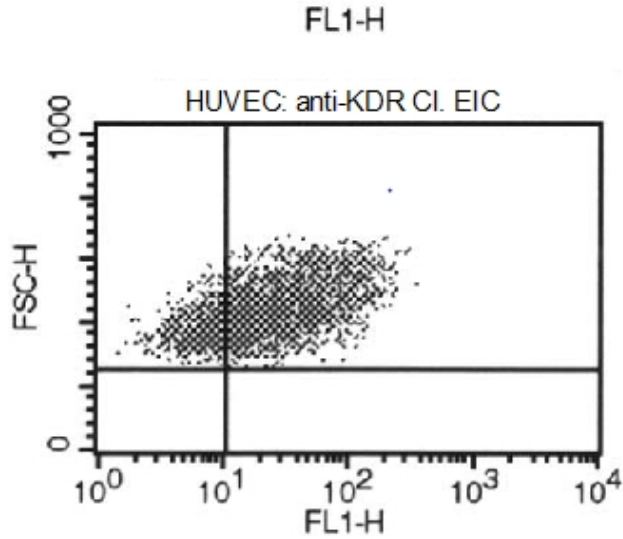
KDR

Mouse Anti-Human VEGFR-2/KDR (Clone #EIC) Biotin mAb

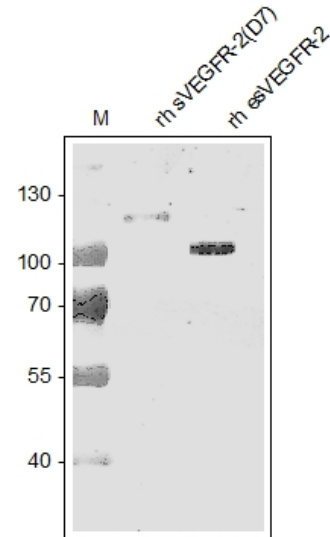
| | | | |
|---------------------------------|---|------------------|-------|
| Catalog No. | CMV002BT | Quantity: | 50 µg |
| Alternate Names: | Vascular endothelial growth factor receptor 2, VEGFR-2, Kinase insert domain receptor, KDR, Fetal liver kinase 1, FLK-1, CD309 | | |
| Description: | VEGF R1 (Flt-1), VEGF R2 (KDR/Flk-1), and VEGF R3 (Flt-4) belong to the class III subfamily of receptor tyrosine kinases (RTKs). All three receptors contain seven immunoglobulin-like repeats in their extracellular domain and kinase insert domains in their intracellular region. They are best known for regulating VEGF family-mediated vasculogenesis, angiogenesis, and lymphangiogenesis. They are also mediators of neurotrophic activity and regulators of hematopoietic development. Human VEGF R2 is thought to be the primary inducer of VEGF-mediated blood vessel growth, while VEGF R3 plays a significant role in VEGF-C and VEGF-D-mediated lymphangiogenesis. | | |
| UniProt ID: | P35968 | | |
| Specificity: | Human VEGFR-2 | | |
| Immunogen: | Recombinant human soluble extracellular KDR (110 kDa) | | |
| Isotype: | Mouse IgG1 | | |
| Clone: | #EIC | | |
| Conjugate: | Biotin | | |
| Formulation: | Lyophilized from PBS, containing 50x BSA and 0,02% sodium azide | | |
| Purification: | Protein G affinity chromatography | | |
| Reconstitution: | Centrifuge vial prior to opening. Reconstitute in sterile water to a concentration of 0.1-1.0 mg/ml | | |
| Applications: | Western blot: use at 2-5 µg/ml ELISA: use at 1-10 µg/ml FACS: use at 2-10 µg/ml IF/IHC: use at 6-30 µg/ml | | |
| Storage & Stability: | The lyophilized antibody is stable for at least 2 years at -20°C. After sterile reconstitution the antibody is stable at 2-8°C for up to 6 months. Frozen aliquots are stable for at least 6 months when stored at -20°C. Addition of a carrier protein or 50% glycerol is recommended for frozen aliquots. | | |



VEGFR-2/KDR expression in HUVE cells.



Western Blot of anti-human VEGFR-2/KDR.



NOT FOR HUMAN USE. FOR RESEARCH ONLY. NOT FOR DIAGNOSTIC OR THERAPEUTIC USE.

