

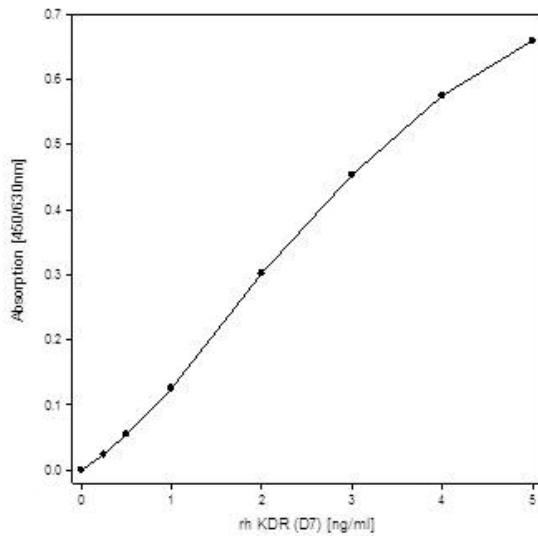
## KDR

### Mouse Anti-Human VEGFR-2/KDR (Clone #EIC) mAb

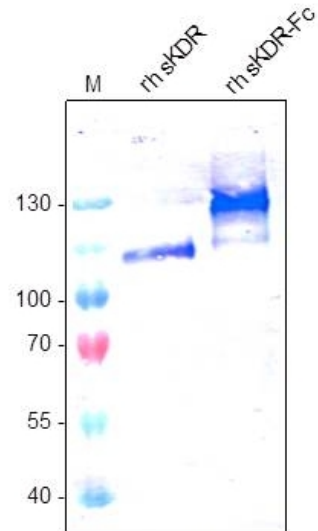
<b>Catalog No.</b>	CMV002	<b>Quantity:</b>	100 µg
<b>Alternate Names:</b>	Vascular endothelial growth factor receptor 2, VEGFR-2, Kinase insert domain receptor, KDR, Fetal liver kinase 1, FLK-1, CD309		
<b>Description:</b>	VEGF R1 (Flt-1), VEGF R2 (KDR/Flk-1), and VEGF R3 (Flt-4) belong to the class III subfamily of receptor tyrosine kinases (RTKs). All three receptors contain seven immunoglobulin-like repeats in their extracellular domain and kinase insert domains in their intracellular region. They are best known for regulating VEGF family-mediated vasculogenesis, angiogenesis, and lymphangiogenesis. They are also mediators of neurotrophic activity and regulators of hematopoietic development. Human VEGF R2 is thought to be the primary inducer of VEGF-mediated blood vessel growth, while VEGF R3 plays a significant role in VEGF-C and VEGF-D-mediated lymphangiogenesis.		
<b>UniProt ID:</b>	P35968		
<b>Specificity:</b>	Human VEGFR-2		
<b>Immunogen:</b>	Recombinant human soluble extracellular KDR (110 kDa)		
<b>Isotype:</b>	Mouse IgG1		
<b>Clone:</b>	#EIC		
<b>Formulation:</b>	Lyophilized from PBS, pH 7.4 without preservative		
<b>Purification:</b>	Protein G affinity chromatography		
<b>Reconstitution:</b>	Centrifuge vial prior to opening. Reconstitute in sterile water to a concentration of 0.1-1.0 mg/ml		
<b>Applications:</b>	<b>Western blot:</b> use at 2-5 µg/ml <b>ELISA:</b> use at 1-10 µg/ml <b>FACS:</b> use at 2-10 µg/ml <b>IF/IHC:</b> use at 6-30 µg/ml		
<b>Storage &amp; Stability:</b>	The lyophilized antibody is stable for at least 2 years at -20°C. After sterile reconstitution the antibody is stable at 2-8°C for up to 6 months. Frozen aliquots are stable for at least 6 months when stored at -20°C. Addition of a carrier protein or 50% glycerol is recommended for frozen aliquots.		



Functional ELISA with anti-human VEGFR-2/KDR. Recombinant human soluble KDR (D7) was coated with increasing amounts in a 96 well microtiter plate. The antibody was used at 1  $\mu$ g/ml.



Western Blot of anti-human VEGFR-2/KDR.



**NOT FOR HUMAN USE. FOR RESEARCH ONLY. NOT FOR DIAGNOSTIC OR THERAPEUTIC USE.**

