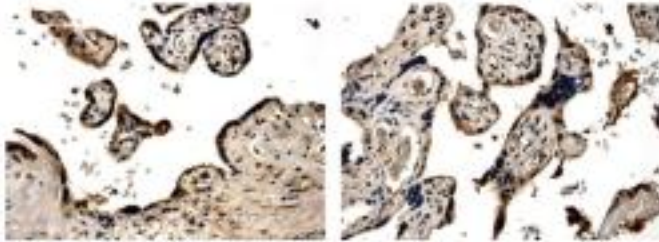


PDGFB

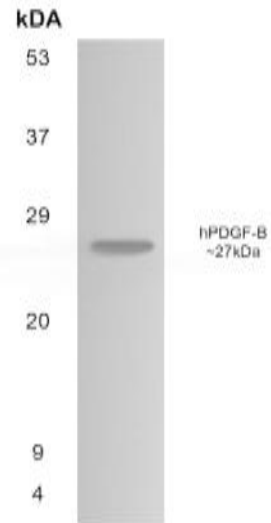
Mouse Anti-Human PDGF-B (Clone 5F66) mAb

Catalog No.	CMP107	Quantity:	100 µg
Alternate Names:	Platelet-derived growth factor subunit B, PDGF subunit B, PDGF-2, Platelet-derived growth factor B chain, Proto-oncogene c-Sis		
Description:	<p>Platelet-Derived Growth Factor beta (PDFGB) is a member of the Platelet-Derived Growth Factor family. The four members of this family are mitogenic factors for cells of mesenchymal origin and are characterized by a motif of eight cysteines. PDGFB can exist either as a homodimer (PDGF-BB) or as a heterodimer (PDGF-AB) with Platelet-Derived Growth Factor alpha (PDGFA), where the dimers are connected by disulfide bonds. Mutations in the <i>PDGFB</i> gene are associated with meningioma. Reciprocal translocations between chromosomes 22 and 7, at sites where this gene and that for <i>COL1A1</i> are located, are associated with a particular type of skin tumor called dermatofibrosarcoma protuberans resulting from unregulated expression of growth factor. Two alternatively spliced transcript variants encoding different isoforms have been identified for this gene.</p>		
UniProt ID:	P01127		
Gene ID:	5155		
Specificity:	Recognizes Human PDGF-BB		
Source:	Cell culture supernatant		
Immunogen:	Recombinant Human PDGF-BB		
Isotype:	Mouse IgG1		
Clone:	5F66		
Formulation:	Lyophilized from sterile filtered PBS		
Purification:	Protein G affinity chromatography		
Reconstitution:	Centrifuge vial briefly prior to opening. Add 500 µl sterile PBS to the vial for a concentration of 200 µg/ml. Gently mix, allow a few minutes to solubilize completely. Do not vortex.		
Cross-Reactivity:	40% cross-reactivity with rPDGF-AB and no cross-reactivity with rPDGF-AA		
Applications:	Western blot: suggested dilution 1:1000 IHC-P: suggested dilution 1:50-1:200		
Storage & Stability:	Lyophilized antibody is stable for at least 1 year at -20°C to -80°C. Reconstituted antibody may be prepared as aliquots and stored at -20°C to -80°C for at least six months. Avoid repeated freeze-thaw cycles.		

Formalin fixed and paraffin embedded human placenta
with CMP107



Western blot using CMP107 with human placenta lysate



NOT FOR HUMAN USE. FOR RESEARCH ONLY. NOT FOR DIAGNOSTIC OR THERAPEUTIC USE.



Cell Sciences®
65 Parker Street
Unit 11
Newburyport, MA 01950

Toll Free: 888-769-1246
Phone: 978-572-1070
Fax: 978-992-0298

E-mail: info@cellsciences.com
Website: www.cellsciences.com