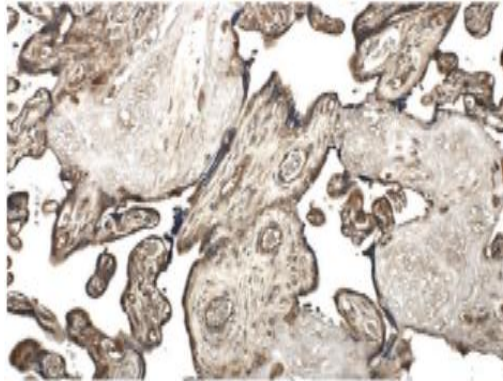


MMP10

Mouse Anti-Human MMP-10 (Clone 9G10) mAb

Catalog No.	CMM109	Quantity:	100 µg
Alternate Names:	Stomelysin 2, SL-2, Matrix metalloproteinase 10, MMP-10, Transin-2		
Description:	<p>Matrix metalloproteinases are a family of zinc and calcium dependent endopeptidases with the combined ability to degrade all the components of the extracellular matrix. MMP10 (stromelysin 2) degrades a broad range of substrates including gelatin, collagen types III, IV and V, fibronectin, aggrecan, and pig cartilage proteoglycan. MMP10 can activate other MMPs such as MMP1 and MMP8. MMP10 is expressed in keratinocytes, T cells, menstrual endometrium and a few tumor samples. Structurally, MMP10 may be divided into four distinct domains: a prodomain which is cleaved upon activation, a catalytic domain containing the zinc binding site; a short linker region, and a carboxyl terminal hemopexin- like domain.</p>		
UniProt ID:	P09238		
Gene ID:	4319		
Source:	Cell culture supernatant		
Specificity:	Recognizes human MMP-10		
Immunogen:	Recombinant human MMP-10		
Isotype:	Mouse IgG2		
Clone:	9G10		
Formulation:	Lyophilized from sterile filtered PBS		
Purification:	Protein G affinity chromatography		
Reconstitution:	Centrifuge vial prior to opening. Reconstitute the antibody with 500 µl sterile PBS to a final concentration of 200 µg/ml.		
Cross-Reactivity:	No cross-reactivity with other human MMPs		
Applications:	Western Blot: suggested dilution 1:1000 IHC-P: suggested dilution 1:50-1:300		
Storage & Stability:	Lyophilized antibody is stable for at least 1 year from date of receipt at -80°C. Reconstituted antibody is stable in working aliquots at -80°C for at least six months. Avoid repeated freeze-thaw cycles.		

IHC-P human placenta tissue section was stained with CMM109



NOT FOR HUMAN USE. FOR RESEARCH ONLY. NOT FOR DIAGNOSTIC OR THERAPEUTIC USE.



Cell Sciences®
65 Parker Street
Unit 11
Newburyport, MA 01950

Toll Free: 888-769-1246
Phone: 978-572-1070
Fax: 978-992-0298

E-mail: info@cellsciences.com
Website: www.cellsciences.com