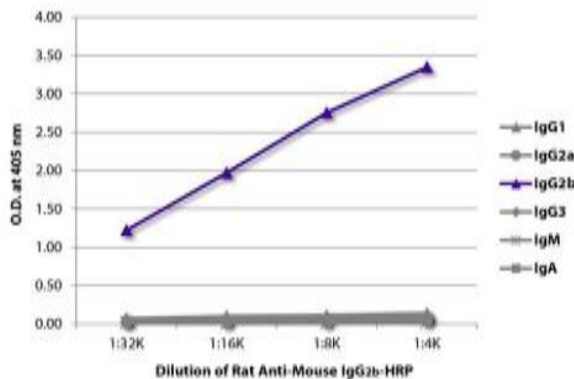


## Rat Anti-Mouse IgG2b Clone SB74g HRP mAb

<b>Catalog No.</b>	CMM035	<b>Quantity:</b>	1.0 mL
<b>Description:</b>	Rat Anti-Mouse IgG2b Clone SB74g HRP mAb		
<b>Specificity:</b>	Mouse IgG <sub>2b</sub>		
<b>Immunogen:</b>	Mouse IgG <sub>2b</sub> hybridoma		
<b>Isotype:</b>	Rat (Sprague Dawley) IgG <sub>2b</sub> λ		
<b>Clone:</b>	SB74g		
<b>Conjugate:</b>	HRP (Horseradish Peroxidase)		
<b>Formulation:</b>	Liquid volume of 1.0 mL supplied in a stock solution in 50% glycerol/50% PBS, pH 7.4; No preservative added.		
<b>Isotype Control</b>	Rat IgG <sub>2b</sub> -HRP		
<b>Applications:</b>	Applications for relevant formats of this clone include ELISA and Western Blot.		
<b>Application Notes:</b>	Recommended dilution for ELISA is 1:4,000-1:8,000. Since applications vary, you should determine the optimum working dilution for the product that is appropriate for your specific need.		
<b>Storage &amp; Stability:</b>	Store at 2-8°C or long-term at -20°C.		

ELISA plate was coated with purified mouse IgG1, IgG2a, IgG2b, IgG3, IgM, and IgA. Immunoglobulins were detected with serially diluted Rat Anti-Mouse IgG2b-HRP.



**NOT FOR HUMAN USE. FOR RESEARCH ONLY. NOT FOR DIAGNOSTIC OR THERAPEUTIC USE.**

