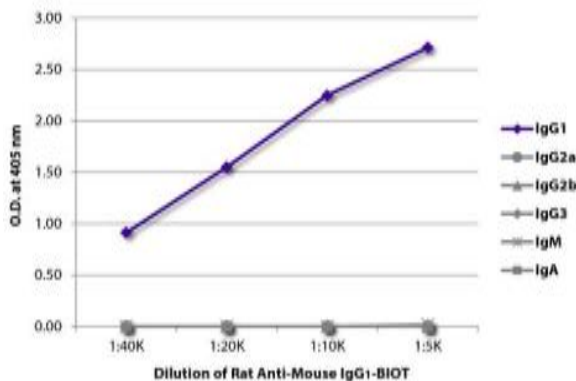


## Rat Anti-Mouse IgG1 Biotinylated mAb

<b>Catalog No.</b>	CMM022	<b>Quantity:</b>	500 µg
<b>Description:</b>	Purified Rat Anti-Mouse IgG <sub>1</sub> was biotinylated for use in ELISA and Flow Cytometry.		
<b>Concentration:</b>	500 µg/mL		
<b>Specificity:</b>	Mouse IgG <sub>1</sub> Fc		
<b>Immunogen:</b>	Unknown		
<b>Isotype:</b>	Rat (Sprague Dawley) IgG <sub>2b</sub> K		
<b>Clone:</b>	SB77e		
<b>Conjugate:</b>	Biotin		
<b>Formulation:</b>	PBS containing NaN <sub>3</sub>		
<b>Isotype Control</b>	Rat IgG <sub>2b</sub> -Biotin		
<b>Cross-Reactivity:</b>	Minimal reactivity to human, goat and rabbit IgG and human, rat, hamster, bovine, horse, goat, sheep, chicken, guinea pig, donkey and rabbit serum.		
<b>Applications:</b>	<b>ELISA:</b> suggested dilution 1:5,000 - 1: 20,000 <b>Flow Cytometry:</b> suggested concentration ≤ 1.0 µg/10 <sup>6</sup> cells in 100 µl final volume		
<b>Storage &amp; Stability:</b>	Store at 2-8°C for up to 1 year.		

ELISA plate was coated with purified mouse IgG1, IgG2a, IgG2b, IgG3, IgM, and IgA. Immunoglobulins were detected with serially diluted Rat Anti-Mouse IgG1-BIOT.



**NOT FOR HUMAN USE. FOR RESEARCH ONLY. NOT FOR DIAGNOSTIC OR THERAPEUTIC USE.**

