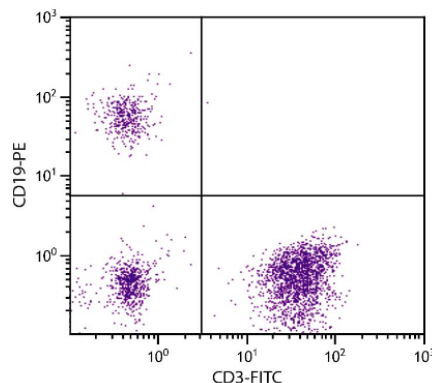


## CD19

### Mouse Anti-Human CD19 (Clone SJ25-C1) PE mAb

<b>Catalog No.</b>	CMH039	<b>Quantity:</b>	100 tests
<b>Alternate Names:</b>	B-lymphocyte antigen CD19, B-lymphocyte surface antigen B4, Differentiation antigen CD19, T-cell surface antigen Leu-12		
<b>Description:</b>	The monoclonal antibody recognizes Human CD19 and is validated for flow cytometry. Lymphocytes proliferate and differentiate in response to various concentrations of different antigens. The ability of the B cell to respond in a specific, yet sensitive manner to the various antigens is achieved with the use of low-affinity antigen receptors. CD19 is a cell surface molecule which assembles with the antigen receptor of B lymphocytes in order to decrease the threshold for antigen receptor-dependent stimulation.		
<b>UniProt ID (target):</b>	P15391		
<b>Volume:</b>	1.0 ml		
<b>Conjugate:</b>	R-phycoerythrin (PE)		
<b>Specificity:</b>	Recognizes human CD19, a 95 kDa protein		
<b>Host:</b>	Mouse BALB/c		
<b>Isotype:</b>	IgG1 kappa		
<b>Immunogen:</b>	NALM-1 and NALM-16 leukemia cell line		
<b>Clone:</b>	SJ25-C1		
<b>Formulation:</b>	PBS containing < 0.1% sodium azide and a stabilizer		
<b>Applications:</b>	Flow Cytometry, IHC		
<b>Application Notes:</b>	Use 10 µl to label 10 <sup>6</sup> cells or 100 µl of whole blood. The optimal concentration should be determined by the user for each specific application.		
<b>Storage &amp; Stability:</b>	Stable at 2-8°C, Avoid exposure to light. <b>DO NOT FREEZE.</b>		

Human PBLs stained with Mouse anti-Human CD19 PE and Mouse anti-Human CD3 FITC



**NOT FOR HUMAN USE. FOR RESEARCH ONLY. NOT FOR DIAGNOSTIC OR THERAPEUTIC USE.**

