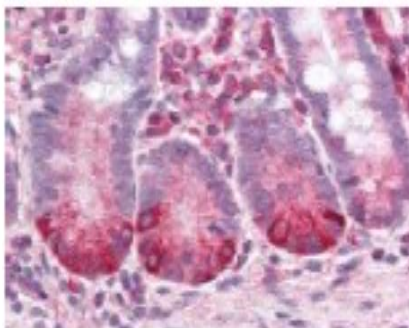


## CXCR2

### Mouse Anti-Human CXCR2/ IL-8 Receptor B mAb

<b>Catalog No.</b>	CMH011	<b>Quantity:</b>	50 µg
<b>Alternate Names:</b>	C-X-C chemokine receptor type 2, CXC-R2, CXCR-2, CDw128b, GRO/MGSA receptor, High affinity interleukin-8 receptor B, IL-8R B, IL-8 receptor type 2, CD182		
<b>Description:</b>	Human CXCR2/ IL-8 Receptor B (IL-8RB), is a member of the G-protein-coupled receptor family. CXCR2/ IL-8RB is a receptor for interleukin 8 (IL-8), which it binds with high affinity, and transduces the signal through a G-protein activated second messenger system. This receptor also binds to CXCL1/ MGSA, a protein with melanoma growth stimulating activity, and has been shown to be a major component required for serum-dependent melanoma cell growth. CXCR2/ IL-8RB mediates neutrophil migration to sites of inflammation and mediates the angiogenic effects of IL-8 in intestinal microvascular endothelial cells.		
<b>UniProt ID:</b>	P25025		
<b>Concentration:</b>	1 mg/ml		
<b>Specificity:</b>	Human IL-8RB		
<b>Isotype:</b>	Mouse IgG1		
<b>Immunogen:</b>	L1.2 cells expressing IL - 8 Receptor B (Human)		
<b>Formulation:</b>	PBS.		
<b>Purification:</b>	Protein G affinity chromatography		
<b>Applications:</b>	Flow Cytometry, Immunohistochemistry		
<b>Application Notes:</b>	IHC: recommended concentration 5 µg/ml, or frozen tissues at 1:10 to 1:20. The optimal concentration should be determined by the user for each specific application.		
<b>Storage &amp; Stability:</b>	Store at 2-8°C or in aliquots at -20°C. <b>Avoid repeated freeze-thaw cycles.</b>		

Immunohistochemistry staining of IL-8 Receptor B in small intestine: formalin-fixed, paraffin-embedded (ffpe), IL-8 Receptor B Monoclonal Antibody.



**NOT FOR HUMAN USE. FOR RESEARCH ONLY. NOT FOR DIAGNOSTIC OR THERAPEUTIC USE.**