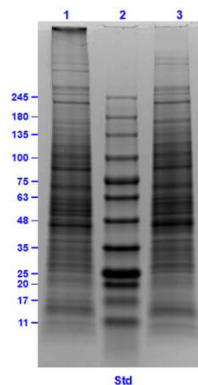


HEK293 whole cell lysate

Catalog No.	CLH00025	Quantity:	500 µg
Description:	HEK293 cells were grown in Dulbecco's medium supplemented with 10% fetal bovine serum. Cells were washed with PBS and then incubated on ice in modified RIPA buffer to lyse the cells. Protein integrity was ensured using a cocktail of protease inhibitors with broad specificity for the inhibition of aspartic, cysteine, and serine proteases as well as aminopeptidases (0.1 mM AEBSF HCl, 0.08 µM Aprotinin, 5 µM Bestatin, 1.5 µM E-64, 2 µM Leupeptin Hemisulfate, 1 µM Pepstatin A). Phosphatase inhibitors 1 mM NaF and 1 mM Na3VO4 were also added. Cell debris was removed by centrifugation. Protein concentration was determined by a modified Lowry assay using a commercially available kit. Protein concentration was adjusted to 2 mg/ml and then an equal volume of 2X SDS-PAGE sample buffer was added.		
Concentration:	1mg/ml by BCA assay (modified Lowry)		
Source:	Human embryonic kidney 293 cell line		
Formulation:	1X SDS-PAGE Sample Buffer (62.5 mM Tris HCl, 2% SDS, 10% Glycerol and 0.005% bromophenol blue, pH 6.8)		
Applications:	SDS-PAGE, western blot		
Application Notes:	Centrifuge vial before use. Lysate is prepared in denaturing buffer WITHOUT dissociating agents (i.e. no 2-mercaptoethanol or dithiothreitol has been added). Heat lysate to 95° C for 5 minutes and rapidly cool. If dissociating conditions are desired, add		
Storage & Stability:	Store at -80°C for 3 months from date of receipt. Upon initial thaw, prepare working aliquots and store at -80°C for extended storage. Avoid repeated freeze-thaw cycles.		

4-20% SDS-PAGE
Lane 1: Reduced HEK293 lysate (10ug)
Lane 3: Non-reduced HEK293 lysate (10ug)



NOT FOR HUMAN USE. FOR RESEARCH ONLY. NOT FOR DIAGNOSTIC OR THERAPEUTIC USE.



Cell Sciences®
65 Parker Street
Unit 11
Newburyport, MA 01950

Toll Free: 888-769-1246
Phone: 978-572-1070
Fax: 978-992-0298

E-mail: info@cellsciences.com
Website: www.cellsciences.com