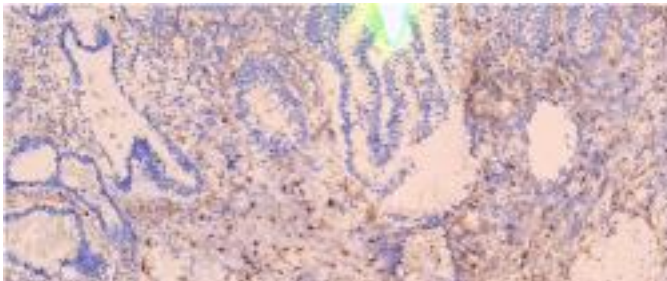


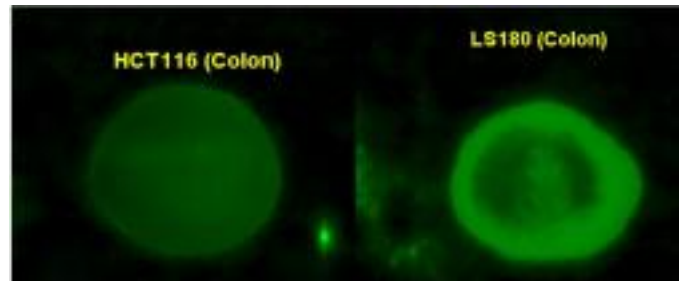
## Rabbit Anti-Human 3'Sulfo-Lewis X (Clone E2-B4) mAb

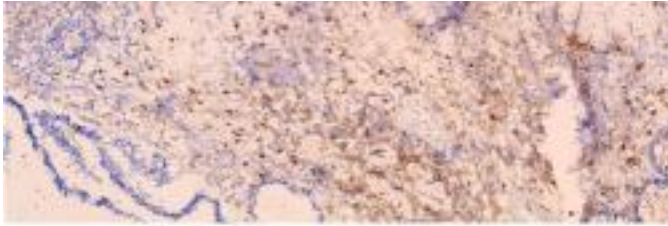
<b>Catalog No.</b>	CGK200A CGK200B CGK200C	<b>Quantity:</b>	50 µg 100 µg 500 µg
<b>Alternate Names:</b>	3'-Sulfo-Lewis X, 3-SLeX		
<b>Description:</b>	3'-Sulfo-Lewis X (3-SLeX) is a glycan epitope that has been reported to act as a ligand for the adhesion molecules E- and L-selectin. The synthesis of 3-SLeX is mediated by the enzyme galactose-3-O-sulfotransferase (GAL3ST2), which is expressed in cell lines with high metastatic potential. Expression of 3-SLeX is therefore potentially relevant to the identification of tumors with poor prognosis and higher likelihood of progression and metastasis. Rabbit Anti-Human 3'Sulfo-Lewis X (Clone E2-B4) mAb is a <b>high affinity IgG1</b> recombinant rabbit monoclonal antibody.		
<b>Source:</b>	HEK293 cell line		
<b>Concentration:</b>	1.0 mg/ml		
<b>Specificity:</b>	Recognizes 3'sulfo-βGal linkage found on the tetrasaccharide carbohydrate Sialyl LewisX		
<b>Isotype:</b>	Rabbit IgG1		
<b>Immunogen:</b>	3'-Sulfo-Lewis X		
<b>Clone:</b>	E2-B4		
<b>Endotoxin:</b>	<0.050 EU/mg, determined by LAL chromogenic endotoxin assay		
<b>Formulation:</b>	Sterile filtered PBS, pH 7.5		
<b>Purification:</b>	Protein A or G affinity chromatography		
<b>Applications:</b>	<p><b>ELISA:</b> suggested concentration 20-50 µg/ml</p> <p><b>IHC-FR:</b> suggested concentration 40 µg/ml</p> <p><b>Immunoblot of cell lipid extracts:</b> suggested concentration 10-50 µg/ml</p> <p>Due to the glycan nature of the epitope recognised by this antibody, traditional protein Western Blotting cannot be used.</p>		
<b>Storage &amp; Stability:</b>	Store at 2-8°C for up to 1 week. Store aliquots at -20 to -80°C for up to 1 year. <b>Avoid repeated freeze-thaw cycles.</b>		

Staining of Human colon carcinoma with clone E2-B4 specific for 3-SLeX



Cell lipid extracts with rabbit anti-3-SLeX





NOT FOR HUMAN USE. FOR RESEARCH ONLY. NOT FOR DIAGNOSTIC OR THERAPEUTIC USE.



**Cell Sciences®**  
65 Parker Street  
Unit 11  
Newburyport, MA 01950

Toll Free: 888-769-1246  
Phone: 978-572-1070  
Fax: 978-992-0298

E-mail: [info@cellsciences.com](mailto:info@cellsciences.com)  
Website: [www.cellsciences.com](http://www.cellsciences.com)