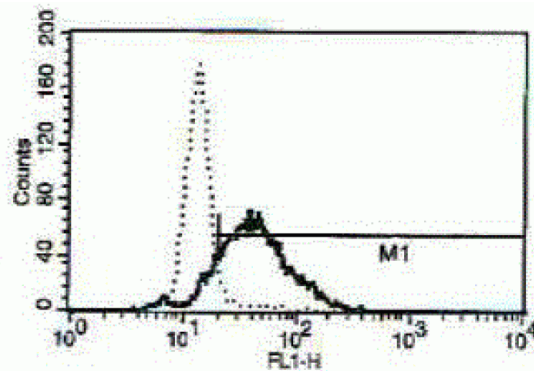


CAMP

Mouse Anti-Human LL-37 (Clone B-T37) mAb

Catalog No.	CDM564	Quantity:	200 tests
Alternate Names:	Antibacterial peptide LL-37, FALL-39 peptide antibiotic		
Description:	The monoclonal antibody recognizes human LL-37, a peptide cleaved from Cathelicidin antimicrobial peptide. Cathelicidins are a family of highly diverse, natural antibiotic peptides of the innate immune system produced constitutively or synthesized in response to the presence of bacteria or their products. LL-37 is directly involved with the disintegration of the microbial cell wall and cell membrane leading to cell death. LL-37 can act as a chemoattractant for neutrophils, monocytes, macrophages, eosinophils and mast cells.		
UniProt ID:	P49913		
Volume:	2.0 ml		
Specificity:	Recognizes native and recombinant LL-37.		
Hybridoma:	Myeloma X63/AG.8653 x Balb/c node cells		
Isotype:	Mouse IgG1 κ		
Immunogen:	Human antimicrobial peptide LL-37		
Clone:	B-T37		
Formulation:	Phosphate-buffered saline with 1 % BSA and 0.09 % sodium azide		
Applications:	Flow Cytometry: Use 10 μ l to label 10 ⁶ cells or 100 μ l of whole blood		
Storage & Stability:	Store at 2-8°C for up to 12 months. DO NOT FREEZE.		

A typical intracytoplasmic staining profile with the B-T37 monoclonal antibody of granulocytes. The grey peak corresponds to the isotype control.



NOT FOR HUMAN USE. FOR RESEARCH ONLY. NOT FOR DIAGNOSTIC OR THERAPEUTIC USE.



Cell Sciences®
65 Parker Street
Unit 11
Newburyport, MA 01950

Toll Free: 888-769-1246
Phone: 978-572-1070
Fax: 978-992-0298

E-mail: info@cellsciences.com
Website: www.cellsciences.com