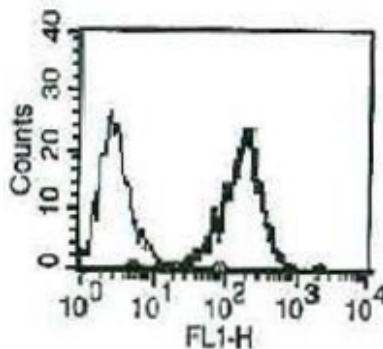


**ENG**

## Mouse Anti-Human CD105 (Clone B-A55) mAb

<b>Catalog No.</b>	CDM562	<b>Quantity:</b>	200 tests
<b>Alternate Names:</b>	Endoglin, ENG		
<b>Description:</b>	CD105 is a 180 kDa transmembrane glycoprotein predominantly expressed on endothelial cells. Elevated levels of CD105 were detected on tumor-associated vascular endothelium, where it functions as an accessory component of the transforming growth factor -beta receptor complex and is involved in vascular development and remodelling. CD105 is emerging as a prime target for tumor imaging and anti-angiogenic cancer therapy.		
<b>UniProt ID:</b>	P17813		
<b>Volume:</b>	2.0 mL		
<b>Specificity:</b>	Recognizes both native and recombinant human CD105		
<b>Hybridoma:</b>	Myeloma X63/AG.8653 x Balb/c node cells		
<b>Immunogen:</b>	Recombinant human CD105		
<b>Isotype:</b>	Mouse IgG <sub>1</sub> , κ		
<b>Clone:</b>	B-A55		
<b>Formulation:</b>	Phosphate-buffered saline with 1 % BSA and 0.09 % sodium azide		
<b>Applications:</b>	<b>Flow Cytometry:</b> Use 10 μl to label 10 <sup>6</sup> cells or 100 μl of whole blood		
<b>Storage &amp; Stability:</b>	Stable at 2-8°C for 12 months. For longer storage, freeze aliquots and store at -20°C to -80°C. <b>Avoid repeated freeze-thaw cycles.</b>		

Typical staining pattern of Eahy 926 (endothelial cells) with CDM480  
 Left peak: Isotype control  
 Right peak: Labeled Eahy 926 cells



**NOT FOR HUMAN USE. FOR RESEARCH ONLY. NOT FOR DIAGNOSTIC OR THERAPEUTIC USE.**



**Cell Sciences®**  
 65 Parker Street  
 Unit 11  
 Newburyport, MA 01950

Toll Free: 888-769-1246  
 Phone: 978-572-1070  
 Fax: 978-992-0298

E-mail: [info@cellsciences.com](mailto:info@cellsciences.com)  
 Website: [www.cellsciences.com](http://www.cellsciences.com)