

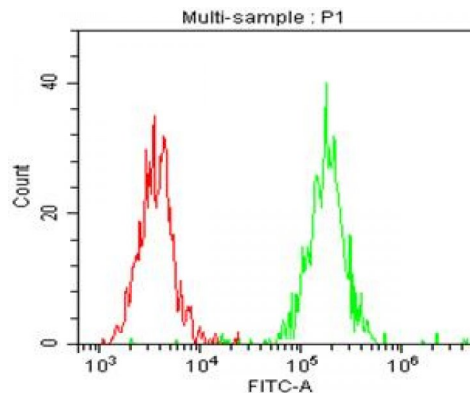
MCAM

Mouse Anti-Human CD146 / MUC18 (Clone B-T46) mAb

Catalog No.	CDM561	Quantity:	200 tests
Alternate Names:	Cell surface glycoprotein MUC18, Melanoma-associated antigen MUC18, Melanoma cell adhesion molecule, MCAM, CD146		
Description:	CD146 is a 118 kD integral transmembrane glycoprotein also known as MUC18, S-Endo, MCAM, and Mel-CAM (melanoma cell adhesion molecule). It belongs to the immunoglobulin superfamily. CD146 is expressed on melanoma cells, epithelial cells, endothelial cells, fibroblasts, activated T cells, multipotent mesenchymal stromal cells, and activated keratinocytes. CD146 mediates heterophilic cell adhesion and regulates monocyte transendothelial migration.		
UniProt ID:	P43121		
Gene ID:	4162		
Volume:	2.0 ml		
Specificity:	Recognizes both recombinant and native human CD146		
Hybridoma:	Myeloma X63/AG.8653 x Balb/c node cells		
Isotype:	Mouse IgG1 Kappa light chain		
Immunogen:	Recombinant human CD146		
Clone:	B-T46		
Formulation:	Phosphate-buffered saline with 1% BSA and 0.09% sodium azide		
Applications:	Flow cytometry: Use 10 µl to label 10 ⁶ cells or 100 µl of whole blood.		
Storage & Stability:	Store at 2-8°C for up to 1 year. DO NOT FREEZE.		

A typical staining pattern of Nalm6 (B cells) with the B-T46 monoclonal antibody.

Red peak Isotope control
Green peak Labelled cells



NOT FOR HUMAN USE. FOR RESEARCH ONLY. NOT FOR DIAGNOSTIC OR THERAPEUTIC USE.

