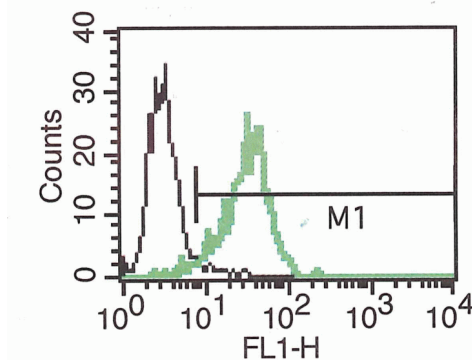


L1CAM

Mouse Anti-Human L1CAM (Clone B-L51) mAb

Catalog No.	CDM560	Quantity:	200 tests
Alternate Names:	CD171, Neural cell adhesion molecule L1, NCAM-L1		
Description:	Neural cell adhesion molecule involved in the dynamics of cell adhesion and in the generation of transmembrane signals at tyrosine kinase receptors. During brain development, critical in multiple processes, including neuronal migration, axonal growth and fasciculation, and synaptogenesis. In the mature brain, plays a role in the dynamics of neuronal structure and function, including synaptic plasticity.		
UniProt ID:	P32004		
Gene ID:	3897		
Volume:	2.0 ml		
Specificity:	Recognizes native and recombinant human L1CAM		
Hybridoma:	Myeloma X63/AG.8653 x Balb/c node cells		
Isotype:	Mouse IgG1 _κ		
Immunogen:	Recombinant human L1CAM/Fc		
Clone:	B-L1		
Formulation:	Phosphate buffered saline with 1% BSA and 0.09% sodium azide		
Applications:	Flow Cytometry: Use 10 μl to label 10 ⁶ cells or 100 μl of whole blood		
Storage & Stability:	Store at 2-8°C for up to 1 year or in working aliquots at -20°C to -80°C. Avoid repeated freeze-thaw cycles.		

A typical staining pattern with B-L51 monoclonal antibody of HeLa cell line



NOT FOR HUMAN USE. FOR RESEARCH ONLY. NOT FOR DIAGNOSTIC OR THERAPEUTIC USE.

