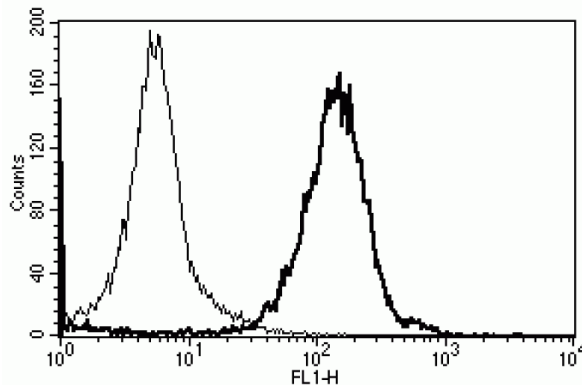


## HLA-A, HLA-B, HLA-C

### Mouse Anti-Human HLA Class I (Clone W6/32) mAb, Azide Free

<b>Catalog No.</b>	CDM557A CDM557B	<b>Quantity:</b>	200 µg 500 µg
<b>Alternate Names:</b>	HLA class I histocompatibility antigen, A alpha chain, B alpha chain, C alpha chain		
<b>Description:</b>	The human leukocyte antigen (HLA) systems are genes on chromosome 6 which encode cell-surface proteins responsible for regulation of the immune system. HLA Class 1 antigens and corresponding MHC Class I antigens found in animals, encoded by loci A, B and C, present/display peptides from within the cell (endogenous) to the cell surface where they attract killer T-cells (CD8+ or cytotoxic T-cells) that destroy the cell.		
<b>UniProt ID (target):</b>	P04439, P01889, P10321		
<b>Concentration:</b>	1.0 mg/mL		
<b>Specificity:</b>	Recognizes an antigenic determinant shared among products of the HLA-A, -B and -C loci		
<b>Hybridoma:</b>	Myeloma X63/AG.8653 x Balb/c spleen cells		
<b>Immunogen:</b>	Membrane of human tonsil cells		
<b>Isotype:</b>	Mouse IgG2a kappa light chain		
<b>Clone:</b>	W6/32		
<b>Formulation:</b>	Sterile-filtered PBS, carrier and preservative free.		
<b>Applications:</b>	Functional studies, Flow cytometry, Immunoprecipitation		
<b>Storage &amp; Stability:</b>	Store at 2-8°C for up to 1 year. <b>DO NOT FREEZE.</b>		

A typical staining pattern with CDM557 and lymphocytes



NOT FOR HUMAN USE. FOR RESEARCH ONLY. NOT FOR DIAGNOSTIC OR THERAPEUTIC USE.



**Cell Sciences®**  
65 Parker Street  
Unit 11  
Newburyport, MA 01950

Toll Free: 888-769-1246  
Phone: 978-572-1070  
Fax: 978-992-0298

E-mail: [info@cellsciences.com](mailto:info@cellsciences.com)  
Website: [www.cellsciences.com](http://www.cellsciences.com)

# cellsciences.com



**Cell Sciences®**  
65 Parker Street  
Unit 11  
Newburyport, MA 01950

Toll Free: 888-769-1246  
Phone: 978-572-1070  
Fax: 978-992-0298

E-mail: [info@cellsciences.com](mailto:info@cellsciences.com)  
Website: [www.cellsciences.com](http://www.cellsciences.com)