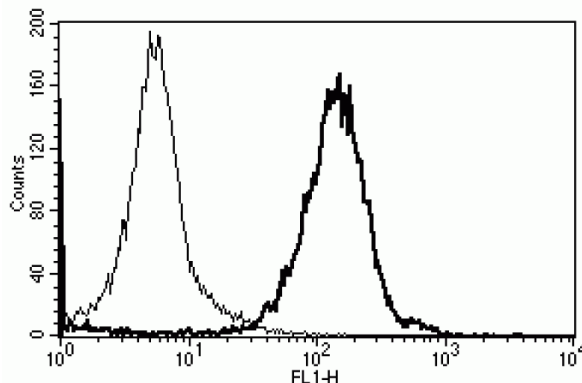


HLA-A, HLA-B, HLA-C

Mouse Anti-Human HLA Class I (Clone W6/32) mAb

Catalog No.	CDM556	Quantity:	200 tests
Alternate Names:	HLA class I histocompatibility antigen, A alpha chain, B alpha chain, C alpha chain		
Description:	The human leukocyte antigen (HLA) systems are genes on chromosome 6 which encode cell-surface proteins responsible for regulation of the immune system. HLA Class 1 antigens and corresponding MHC Class I antigens found in animals, encoded by loci A, B and C, present/display peptides from within the cell (endogenous) to the cell surface where they attract killer T-cells (CD8+ or cytotoxic T-cells) that destroy the cell.		
UniProt ID (target):	P04439, P01889, P10321		
Volume:	2.0 ml		
Specificity:	Recognizes an antigenic determinant shared among products of the HLA-A, -B and -C loci		
Hybridoma:	Myeloma X63/AG.8653 x Balb/c spleen cells		
Immunogen:	Membrane of human tonsil cells		
Isotype:	Mouse IgG2a kappa light chain		
Clone:	W6/32		
Formulation:	Phosphate-buffered saline with 1 % BSA and 0.09 % sodium azide		
Applications:	Flow cytometry: Use 10 μ l to label 10 ⁶ cells or 100 μ l of whole blood		
Storage & Stability:	Store at 2-8°C for up to 1 year. DO NOT FREEZE.		

A typical staining pattern with CDM557 and lymphocytes



NOT FOR HUMAN USE. FOR RESEARCH ONLY. NOT FOR DIAGNOSTIC OR THERAPEUTIC USE.



Cell Sciences®
65 Parker Street
Unit 11
Newburyport, MA 01950

Toll Free: 888-769-1246
Phone: 978-572-1070
Fax: 978-992-0298

E-mail: info@cellsciences.com
Website: www.cellsciences.com