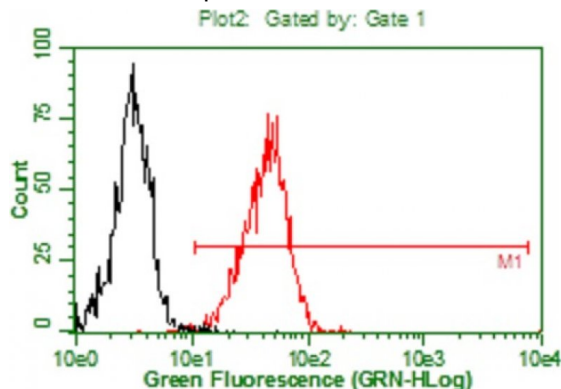


## LGALS8

### Mouse Anti-Human Galectin-8 (Clone B-Z18) mAb

<b>Catalog No.</b>	CDM554	<b>Quantity:</b>	200 tests
<b>Alternate Names:</b>	LGALS8, GAL-8, PCTA-1		
<b>Description:</b>	Beta-galactoside-binding lectin that acts as a sensor of membrane damage caused by infection and restricts the proliferation of infecting pathogens by targeting them for autophagy. Detects membrane rupture by binding beta-galactoside ligands located on the luminal side of the endosome membrane; these ligands becoming exposed to the cytoplasm following rupture. Restricts infection by initiating autophagy via interaction with CALCOCO2/NDP52. Required to restrict infection of bacterial invasion such as <i>S. typhimurium</i> , and to restrict infection of Picornaviridae viruses. Has a marked preference for 3'-O-sialylated and 3'-O-sulfated glycans.		
<b>UniProt ID:</b>	O00214		
<b>Gene ID:</b>	3964		
<b>Volume:</b>	2.0 ml		
<b>Specificity:</b>	Recognizes native and recombinant human galectin-8		
<b>Hybridoma:</b>	Myeloma X63/AG.8653 x Balb/c node cells		
<b>Isotype:</b>	Mouse IgG2a <sub>κ</sub>		
<b>Immunogen:</b>	Recombinant human galectin-8		
<b>Clone:</b>	B-Z18		
<b>Formulation:</b>	Phosphate-buffered saline with 1% BSA and 0.09% sodium azide		
<b>Applications:</b>	<b>Flow Cytometry:</b> Use 10 µl to label 10 <sup>6</sup> cells or 100 µl of whole blood		
<b>Storage &amp; Stability:</b>	Stable at 2-8°C for 12 months. <b>DO NOT FREEZE.</b>		

A typical staining pattern of YT (T cells) with the B-Z18 monoclonal antibody  
 Black peak: Isotype control  
 Red peak: Labelled cells



**NOT FOR HUMAN USE. FOR RESEARCH ONLY. NOT FOR DIAGNOSTIC OR THERAPEUTIC USE.**

# cellsciences.com



**Cell Sciences®**  
65 Parker Street  
Unit 11  
Newburyport, MA 01950

Toll Free: 888-769-1246  
Phone: 978-572-1070  
Fax: 978-992-0298

E-mail: [info@cellsciences.com](mailto:info@cellsciences.com)  
Website: [www.cellsciences.com](http://www.cellsciences.com)