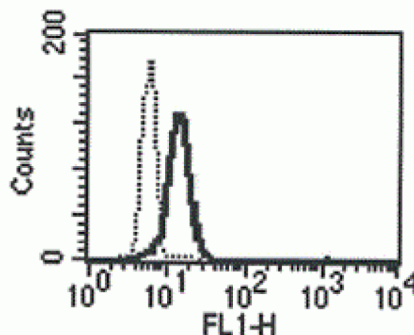


LGALS3

Mouse Anti-Human Galectin-3 (Clone B-S43) mAb

Catalog No.	CDM553	Quantity:	200 tests
Alternate Names:	Gal-3, Carbohydrate-binding protein 35, CBP 35, Galactose-binding protein, GALBP, 35 kDa lectin, Lectin L-29, Mac-2 antigen		
Description:	Galectin-3 is a member of the galectin family of carbohydrate binding proteins, which have an affinity for beta-galactosides. The protein is characterized by an N-terminal proline-rich tandem repeat domain and a single C-terminal carbohydrate recognition domain. The protein can self-associate through the N-terminal domain allowing it to bind to multivalent saccharide ligands. It localizes to the extracellular matrix, the cytoplasm, and the nucleus and plays a role in numerous cellular functions including apoptosis, innate immunity, cell adhesion, T-cell regulation.		
UniProt ID:	P17931		
Volume:	2.0 ml		
Specificity:	Recognizes both native and recombinant Galectin-3.		
Hybridoma:	Myeloma X63/AG.8653 x BALB/c lymph node cells		
Immunogen:	Recombinant human Galectin-3		
Isotype:	Mouse IgG2ak		
Clone:	B-S43		
Formulation:	Phosphate-buffered saline with 1% BSA and 0.09% sodium azide		
Applications:	Flow Cytometry: Use 10 µl to label 10 ⁶ cells or 100 µl of whole blood		
Storage & Stability:	Stable at 2-8°C for 1 year. For longer storage, freeze in aliquots at -20°C to -80°C. Avoid repeated freeze-thaw cycles.		

A typical intracytoplasmic staining pattern with the B-S43 monoclonal antibody of monocytes



NOT FOR HUMAN USE. FOR RESEARCH ONLY. NOT FOR DIAGNOSTIC OR THERAPEUTIC USE.



Cell Sciences®
65 Parker Street
Unit 11
Newburyport, MA 01950

Toll Free: 888-769-1246
Phone: 978-572-1070
Fax: 978-992-0298

E-mail: info@cellsciences.com
Website: www.cellsciences.com