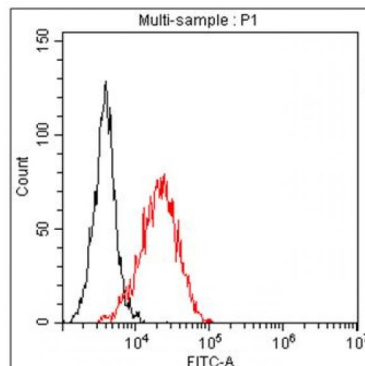


## VCAM1

### Mouse Anti-Human VCAM1 / CD106 (Clone B-S6) mAb

<b>Catalog No.</b>	CDM552	<b>Quantity:</b>	200 tests
<b>Alternate Names:</b>	Vascular Cell Adhesion Molecule 1, INCAM-100		
<b>Description:</b>	The mouse monoclonal antibody recognizes human Vascular Cell Adhesion Molecule 1 (VCAM1/CD106), a member of the Ig superfamily. VCAM1 is a cell surface sialoglycoprotein expressed by cytokine-activated endothelium. This type I membrane protein mediates leukocyte-endothelial cell adhesion and signal transduction, and may play a role in the development of atherosclerosis and rheumatoid arthritis.		
<b>UniProt ID:</b>	P19320		
<b>Volume:</b>	2.0 ml		
<b>Conjugate:</b>	Unconjugated		
<b>Specificity:</b>	Recognizes the Vascular Cellular Adhesion Molecule-1 (VCAM-1), a 110 kDa protein		
<b>Hybridoma:</b>	Myeloma X63/AG.8653 x Balb/c spleen cells		
<b>Isotype:</b>	Mouse IgG1κ		
<b>Immunogen:</b>	Activated human umbilical vein endothelial cells		
<b>Clone:</b>	B-S6		
<b>Formulation:</b>	Phosphate-buffered saline with 1% BSA and 0.09% sodium azide		
<b>Concentration:</b>	1.0 mg/ml		
<b>Applications:</b>	<b>Flow Cytometry:</b> Use 10 µl to label 10 <sup>6</sup> cells or 100 µl of whole blood		
<b>Storage &amp; Stability:</b>	Stable at 2-8°C for 1 year. For longer storage, freeze aliquots at -20 to -80°C. <b>Avoid repeated freeze-thaw cycles.</b>		

A typical straining pattern obtained with the clone B-S6 (red line) on T-lymphoma cell line HUT78 compared to the isotype control (black line).



NOT FOR HUMAN USE. FOR RESEARCH ONLY. NOT FOR DIAGNOSTIC OR THERAPEUTIC USE.

# cellsciences.com



**Cell Sciences®**  
65 Parker Street  
Unit 11  
Newburyport, MA 01950

Toll Free: 888-769-1246  
Phone: 978-572-1070  
Fax: 978-992-0298

E-mail: [info@cellsciences.com](mailto:info@cellsciences.com)  
Website: [www.cellsciences.com](http://www.cellsciences.com)