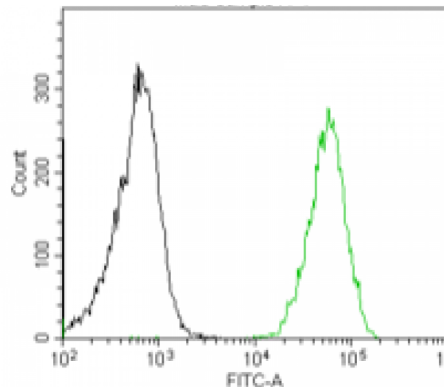


CD48

Mouse Anti-Human CD48 (Clone B-P59) mAb

Catalog No.	CDM550	Quantity:	200 tests
Alternate Names:	CD48 antigen, B-lymphocyte activation marker BLAST-1, BCM1 surface antigen, Leukocyte antigen MEM-102, Signaling lymphocytic activation molecule 2, SLAM family member 2, SLAMF2		
Description:	CD48 is a member of the CD2 subfamily of immunoglobulin-like receptors which includes SLAM (signaling lymphocyte activation molecules) proteins. The encoded protein is found on the surface of lymphocytes and other immune cells, dendritic cells and endothelial cells, and participates in activation and differentiation pathways in these cells. The encoded protein does not have a transmembrane domain, however, but is held at the cell surface by a glycosylphosphatidylinositol (GPI) anchor via a C-terminal domain which maybe cleaved to yield a soluble form of the receptor.		
UniProt ID (target):	P09326		
Volume:	2.0 ml		
Specificity:	Recognizes both native and recombinant human CD48		
Hybridoma:	Myeloma X63/AG.8653 x Balb/c node cells		
Immunogen:	Recombinant human CD48		
Isotype:	Mouse IgG2a kappa light chain		
Clone:	B-P59		
Formulation:	Phosphate buffered saline with 1% BSA and 0.09% sodium azide		
Applications:	Flow cytometry: use 10 µl to label 10 ⁶ cells or 100 µl of whole blood		
Storage & Stability:	Store at 2-8°C for up to 1 year. For longer storage, freeze aliquots.		

A typical staining pattern with the B-P59 monoclonal antibody on lymphocytes.



NOT FOR HUMAN USE. FOR RESEARCH ONLY. NOT FOR DIAGNOSTIC OR THERAPEUTIC USE.

