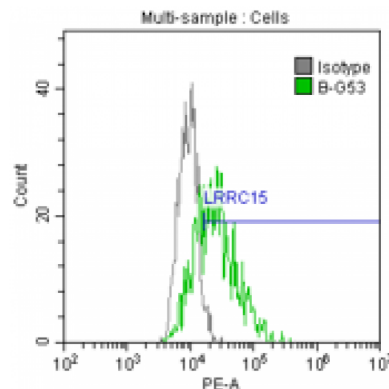


LRRC15

Mouse Anti-Human LRRC15 (Clone B-G53) mAb, Azide Free

Catalog No.	CDM543A CDM543B	Quantity:	200 µg 500 µg
Alternate Names:	Leucine-rich repeat-containing protein 15, Leucine-rich repeat protein induced by beta-amyloid homolog (hLib)		
Description:	Leucine-rich repeats (LRR) are short (19–29 residue) sequence motifs present in protein members of the leucine-rich repeat (LRR) superfamily. This family of proteins generally regulates a broad repertoire of functions, including cell adhesion, invasion, immune response, apoptosis, autophagy, extracellular matrix assembly, RNA processing, and neuronal development. LRRC15 overexpression is quite specific for malignancy as it tends to be restricted to solid tumors and their cancer-associated stromal fibroblasts while sparing normal host tissue. This overexpression has been shown to promote metastasis and progression in breast cancer, ovarian cancer, and soft tissue sarcomas. As a transmembrane protein, LRRC15 has been reported as a robust and emerging therapeutic target for cancer treatment.		
UniProt ID:	Q8TF66		
Concentration:	1.0 mg/mL		
Specificity:	Recognizes both native and recombinant human LRRC15		
Hybridoma:	Myeloma X63/AG.8653 x Balb/c node cells		
Immunogen:	Recombinant human LRRC15		
Isotype:	Mouse IgG2b kappa light chain		
Clone:	B-G53		
Formulation:	Sterile-filtered PBS, carrier and preservative free.		
Applications:	Flow cytometry		
Storage & Stability:	Store at 2-8°C for up to 1 year. DO NOT FREEZE.		

Typical staining pattern of U87-MG cell line with B-G53 mAb.



NOT FOR HUMAN USE. FOR RESEARCH ONLY. NOT FOR DIAGNOSTIC OR THERAPEUTIC USE.



Cell Sciences®
65 Parker Street
Unit 11
Newburyport, MA 01950

Toll Free: 888-769-1246
Phone: 978-572-1070
Fax: 978-992-0298

E-mail: info@cellsciences.com
Website: www.cellsciences.com

cellsciences.com



Cell Sciences®
65 Parker Street
Unit 11
Newburyport, MA 01950

Toll Free: 888-769-1246
Phone: 978-572-1070
Fax: 978-992-0298

E-mail: info@cellsciences.com
Website: www.cellsciences.com