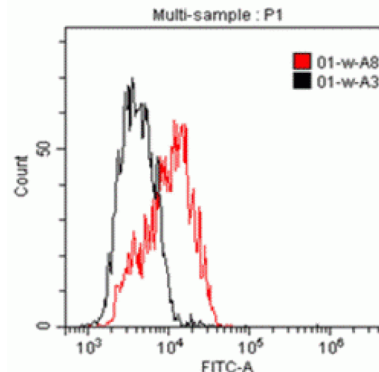


IL1RAP

Mouse Anti-Human IL-1RAcP / IL-1R3 (Clone B-L43) mAb, FITC

| | | | |
|---------------------------------|---|------------------|-----------|
| Catalog No. | CDM541 | Quantity: | 100 tests |
| Alternate Names: | Interleukin-1 receptor accessory protein, IL-1RAcP, Interleukin-1 receptor 3, IL-1R-3, IL-1R3 | | |
| Description: | The pro-inflammatory cytokine IL-1 induced cellular response requires two subunits of its receptor, IL-1 receptor I(IL-1RI) and IL-1 receptor accessory protein (IL-1RAcP). The IL-1 Receptor Accessory Protein (IL-1RAcP) forms a complex with IL-1RI in response to IL-1 treatment. The IL-1 receptor-associated kinase (IRAK), which mediates activation of NF- κ B inducing kinase (NIK) and of NF- κ B, recruits to the IL-1R complex through IL-1 RAcP. IL-1 activation of stress-activated protein kinase and of acid sphingomyelinase also requires IL-1RAcP. Like IL-1RI, IL-1RAcP subunit is essential for IL-1 mediated cellular response and expressed in many tissues. | | |
| UniProt ID: | Q9NPH3 | | |
| Hybridoma: | Myeloma X63/AG.8653 x Balb/c spleen cells | | |
| Specificity: | Recognizes native and recombinant human IL1RAP | | |
| Isotype: | Mouse IgG1 kappa | | |
| Immunogen: | Recombinant human IL1RAcP | | |
| Clone: | B-L43 | | |
| Quantity: | 100 tests/1 ml | | |
| Formulation: | PBS with 5% BSA and 0.09% sodium azide | | |
| Application Notes: | Flow Cytometry: Use 10 μ l to label 10 ⁶ cells or 100 μ l of whole blood | | |
| Storage & Stability: | Stable at 2-8°C for 12 months. For longer storage, freeze aliquots at -20 to -80°C. Avoid repeated freeze-thaw cycles. | | |

Typical staining pattern of KU812 cell line with monoclonal antibody CDM541



NOT FOR HUMAN USE. FOR RESEARCH ONLY. NOT FOR DIAGNOSTIC OR THERAPEUTIC USE.