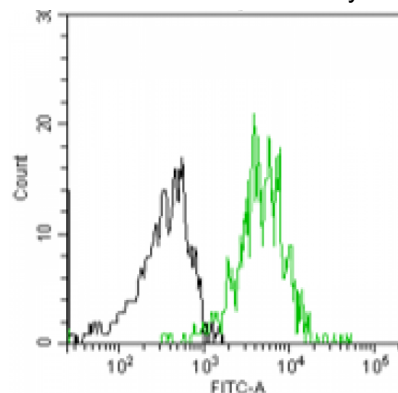


CD226

Mouse Anti-Human CD226 (Clone B-G51) mAb

Catalog No.	CDM539	Quantity:	200 tests
Alternate Names:	CD226 antigen, DNAM-1		
Description:	CD226, a member of the immunoglobulin superfamily, is highly expressed on the surface of NK cells and CD8 + T cells. As an important NK cell activating receptor, it is widely involved in various immune responses. Studies have shown that CD226 is involved in controlling NK cell adhesion, cytokine secretion, and cytotoxicity.		
UniProt ID:	P15762		
Quantity:	200 tests/2 mL		
Specificity:	Recognizes both native and recombinant human CD226, a 65 kDa protein.		
Hybridoma:	Myeloma X63/AG.8653 x Balb/c node cells		
Immunogen:	Recombinant human CD226		
Isotype:	Mouse IgG2a kappa light chain		
Clone:	B-G51		
Formulation:	PBS with 1% BSA and 0.09% sodium azide		
Application Notes:	Flow cytometry: Use 10 µl to label 10 ⁶ cells or 100 µl of whole blood		
Storage & Stability:	Store at 2-8°C for up to 1 year or in working aliquots at -20°C to -80°C. Avoid repeated freeze-thaw cycles.		

Typical staining pattern with monoclonal antibody CDM538 on monocytes



NOT FOR HUMAN USE. FOR RESEARCH ONLY. NOT FOR DIAGNOSTIC OR THERAPEUTIC USE.

