

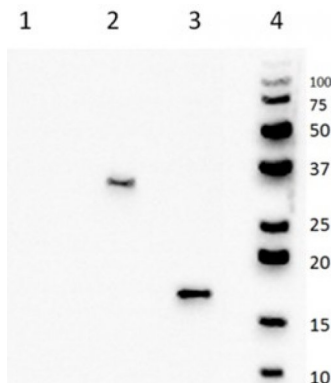
## IL1B

### Mouse Anti-Human IL-1 beta (Clone B-B53) mAb, Azide Free

<b>Catalog No.</b>	CDM530A CDM530B	<b>Quantity:</b>	200 µg 500 µg
<b>Alternate Names:</b>	Interleukin-1 beta, Catabolin		
<b>Description:</b>	The monoclonal antibody recognizes human IL-1β, a member of the interleukin 1 cytokine family. This cytokine is produced by activated macrophages as a pro-protein, which is cleaved to its active form by caspase 1. This cytokine is an important mediator of the inflammatory response, and is involved in a variety of cellular activities, including cell proliferation, differentiation, and apoptosis.		
<b>UniProt ID:</b>	P01584		
<b>Gene ID:</b>	3553		
<b>Concentration:</b>	1.0 mg/mL		
<b>Specificity:</b>	Recognizes native and recombinant human IL-1b		
<b>Hybridoma:</b>	Myeloma X63/AG.8653 x Balb/c spleen cells		
<b>Isotype:</b>	Mouse IgG1 Kappa light chain		
<b>Immunogen:</b>	Recombinant Human IL1β		
<b>Clone:</b>	B-B53		
<b>Formulation:</b>	Sterile-filtered PBS, carrier and preservative free.		
<b>Applications:</b>	ELISA, Western blot		
<b>Storage &amp; Stability:</b>	Store at 2-8°C for up to 1 year or in working aliquots at -20°C to -80°C. <b>Avoid repeated freeze-thaw cycles.</b>		

#### Western Blot with B-B53

- 1: lysate of non-activated monocyte + monensin
- 2: lysate of LPS activated monocyte + monensin
- 3: recombinant human IL-1β
- 4: molecular weight marker



NOT FOR HUMAN USE. FOR RESEARCH ONLY. NOT FOR DIAGNOSTIC OR THERAPEUTIC USE.



**Cell Sciences®**  
65 Parker Street  
Unit 11  
Newburyport, MA 01950

Toll Free: 888-769-1246  
Phone: 978-572-1070  
Fax: 978-992-0298

E-mail: [info@cellsciences.com](mailto:info@cellsciences.com)  
Website: [www.cellsciences.com](http://www.cellsciences.com)

# cellsciences.com



**Cell Sciences®**  
65 Parker Street  
Unit 11  
Newburyport, MA 01950

Toll Free: 888-769-1246  
Phone: 978-572-1070  
Fax: 978-992-0298

E-mail: [info@cellsciences.com](mailto:info@cellsciences.com)  
Website: [www.cellsciences.com](http://www.cellsciences.com)