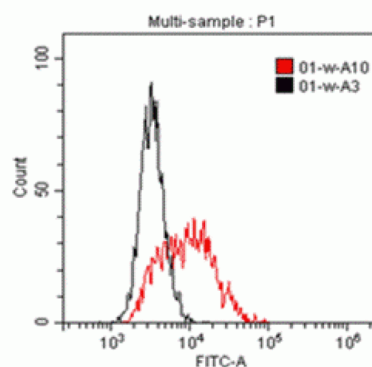


## IL1RAP

### Mouse Anti-Human IL-1RAcP / IL-1R3 (Clone B-R58) mAb, Azide Free

<b>Catalog No.</b>	CDM525A CDM525B	<b>Quantity:</b>	200 µg 500 µg
<b>Alternate Names:</b>	Interleukin-1 receptor accessory protein, IL-1RAcP, Interleukin-1 receptor 3, IL-1R-3, IL-1R3		
<b>Description:</b>	The pro-inflammatory cytokine IL-1 induced cellular response requires two subunits of its receptor, IL-1 receptor I(IL-1RI) and IL-1 receptor accessory protein (IL-1RAcP). The IL-1 Receptor Accessory Protein (IL-1RAcP) forms a complex with IL-1RI in response to IL-1 treatment. The IL-1 receptor-associated kinase (IRAK), which mediates activation of NF-κB inducing kinase (NIK) and of NF-κB, recruits to the IL-1R complex through IL-1 RAcP. IL-1 activation of stress-activated protein kinase and of acid sphingomyelinase also requires IL-1RAcP. Like IL-1RI, IL-1RAcP subunit is essential for IL-1 mediated cellular response and is expressed in many tissues.		
<b>UniProt ID:</b>	Q9NPH3		
<b>Gene ID:</b>	3556		
<b>Hybridoma:</b>	Myeloma X63/AG.8653 x Balb/c spleen cells		
<b>Specificity:</b>	Recognizes native and recombinant human IL1RAP		
<b>Isotype:</b>	Mouse IgG1 kappa		
<b>Immunogen:</b>	Recombinant human IL1RAcP		
<b>Clone:</b>	B-R58		
<b>Concentration:</b>	1.0 mg/ml		
<b>Formulation:</b>	Sterile-filtered PBS, carrier and preservative free.		
<b>Applications:</b>	ELISA, Flow cytometry		
<b>Storage &amp; Stability:</b>	Stable at 2-8°C for 12 months. For longer storage, freeze aliquots at -20 to -80°C. <b>Avoid repeated freeze-thaw cycles.</b>		



# cellsciences.com

NOT FOR HUMAN USE. FOR RESEARCH ONLY. NOT FOR DIAGNOSTIC OR THERAPEUTIC USE.



**Cell Sciences®**  
65 Parker Street  
Unit 11  
Newburyport, MA 01950

Toll Free: 888-769-1246  
Phone: 978-572-1070  
Fax: 978-992-0298

E-mail: [info@cellsciences.com](mailto:info@cellsciences.com)  
Website: [www.cellsciences.com](http://www.cellsciences.com)