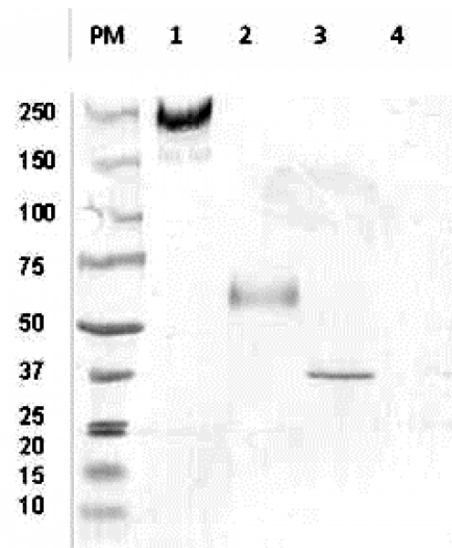


## EPCAM

### Mouse Anti-Human Ep-CAM/CD326 (B-P43) mAb, Azide Free

<b>Catalog No.</b>	CDM505A CDM505B	<b>Quantity:</b>	200 µg 500 µg
<b>Alternate Names:</b>	Epithelial cell adhesion molecule, CD326, Adenocarcinoma-associated antigen, Cell surface glycoprotein Trop-1, Epithelial glycoprotein 314, EGP314		
<b>Description:</b>	Ep-CAM is a ~40 kDa protein that functions mainly as an epithelial cell adhesion molecule, but plays roles in such diverse processes as signaling, cell migration, proliferation, and differentiation. Ep-CAM is expressed in the majority of human carcinomas and is a marker for tumors of epithelial lineage. The antigen is also being used as a target for immunotherapy treatment of human carcinomas.		
<b>UniProt ID:</b>	P16422		
<b>Concentration:</b>	1.0 mg/mL		
<b>Specificity:</b>	Recognizes both native and recombinant human Ep-CAM		
<b>Hybridoma:</b>	Myeloma X63/AG.8653 x Balb/c node cells		
<b>Immunogen:</b>	Recombinant human EpCAM/Fc		
<b>Isotype:</b>	Mouse IgG <sub>1</sub> κ		
<b>Clone:</b>	B-P43		
<b>Formulation:</b>	Sterile-filtered PBS, carrier and preservative free.		
<b>Application Notes:</b>	Western Blot		
<b>Storage &amp; Stability:</b>	Stable at 2-8°C for 12 months. For longer storage, freeze aliquots and store at -20°C to -80°C. <b>Avoid repeated freeze-thaw cycles.</b>		

Western Blot with B-P43  
 1: rh Epcam (non-reduced form)  
 2: rh Epcam (reduced form)  
 3: Lysat MCF7 (non-reduced form)  
 4: Lysat MCF7 (reduced form)



NOT FOR HUMAN USE. FOR RESEARCH ONLY. NOT FOR DIAGNOSTIC OR THERAPEUTIC USE.



**Cell Sciences®**  
 65 Parker Street  
 Unit 11  
 Newburyport, MA 01950

Toll Free: 888-769-1246  
 Phone: 978-572-1070  
 Fax: 978-992-0298

E-mail: [info@cellsciences.com](mailto:info@cellsciences.com)  
 Website: [www.cellsciences.com](http://www.cellsciences.com)