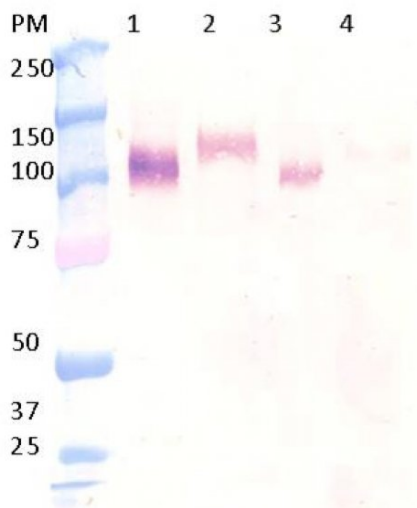


## MCAM

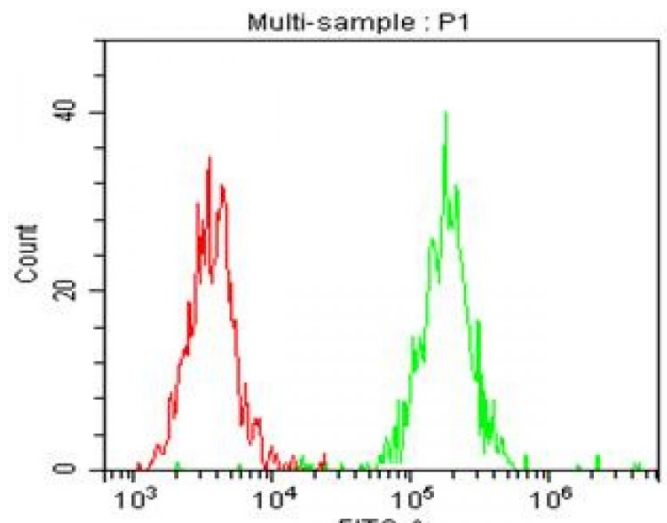
### Mouse Anti-Human CD146 / MUC18 (Clone B-T46) mAb, Azide Free

<b>Catalog No.</b>	CDM503A CDM503B	<b>Quantity:</b>	200 µg 500 µg
<b>Alternate Names:</b>	Cell surface glycoprotein MUC18, Melanoma-associated antigen MUC18, Melanoma cell adhesion molecule, MCAM, CD146		
<b>UniProt ID:</b>	P43121		
<b>Gene ID:</b>	4162		
<b>Concentration:</b>	1.0 mg/ml		
<b>Specificity:</b>	Recognizes both recombinant and native human CD146		
<b>Hybridoma:</b>	Myeloma X63/AG.8653 x Balb/c node cells		
<b>Isotype:</b>	Mouse IgG1 Kappa light chain		
<b>Immunogen:</b>	Recombinant human CD146		
<b>Clone:</b>	B-T46		
<b>Formulation:</b>	Sterile-filtered PBS, carrier and preservative free.		
<b>Applications:</b>	Western blot, <b>Flow cytometry:</b> Use 10 µl to label 10 <sup>6</sup> cells or 100 µl of whole blood. The optimal concentration should be determined by the user.		
<b>Storage &amp; Stability:</b>	Store at 2-8°C for up to 1 year. <b>DO NOT FREEZE.</b>		

Western Blot with B-T46  
 1- Lysat Nalm6 non-reduced  
 2- Lysat Nalm6 reduced  
 3- Lysat CEM non-reduced  
 4- Lysat CEM reduced



A typical staining pattern of Nalm6 (B cells) with the B-T46 monoclonal antibody.  
 Red peak Isotope control  
 Green peak Labelled cells



# cellsciences.com



FITC-A

NOT FOR HUMAN USE. FOR RESEARCH ONLY. NOT FOR DIAGNOSTIC OR THERAPEUTIC USE.



**Cell Sciences®**  
65 Parker Street  
Unit 11  
Newburyport, MA 01950

Toll Free: 888-769-1246  
Phone: 978-572-1070  
Fax: 978-992-0298

E-mail: [info@cellsciences.com](mailto:info@cellsciences.com)  
Website: [www.cellsciences.com](http://www.cellsciences.com)